

Ennum Ezhuthum

Summative Assessment - First Term

Science

Class : 5

Name & Section :

I. Choose and write the correct answer.

1. Which of the following is not a salivary gland?

- a) Submandibular gland b) Parotid gland
c) Liver gland d) Sublingual gland

Answer: _____

2. Which part absorbs the nutrients in the digested food?

- a) Esophagus b) Small intestine c) Liver d) Rectum

Answer: _____

3. Choose the odd one based on the classification of fiber.

- a) Nylon b) Coir c) Wool d) Silk

Answer: _____

II. Fill in the blanks.

4. _____ energy is useful to produce Vitamin D in human beings.

5. The density of oil is _____ than the density of water.

6. In _____ molecules are closely packed.

III. Write true or false.

7. Pulmonary artery carries oxygenated blood. _____

8. When lime powder is added to water, water gets cooled. _____

9. A book kept on a table has potential energy. _____

IV. Match the following.

10. Degradable waste – Scattering of light Answer: _____

11. Kinetic energy – Food waste Answer: _____

12. Sir C. V. Raman – Moving of a swing Answer: _____

V. Choose the odd one.

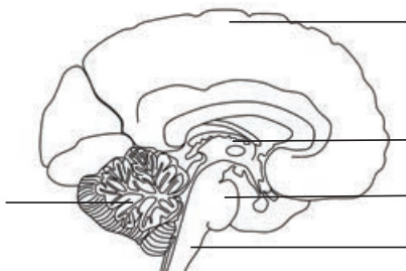
13. Salt, Sugar, Lemon juice, Stone. Answer: _____

14. Plastic, Vegetable waste, Food waste, Paper waste. Answer: _____

15. Changing of ice into water, changing of rice into cooked rice, Butter becoming ghee,
Changing of bud into flower. Answer: _____

VI. Answer the following questions.

16. Label the parts of the human brain.



17. Match the following.

Forebrain	-	Pancreatic juice
Urinary bladder	-	Thinking
Lungs	-	Temporary storage organ of urine
Pancreas	-	4 chambers
Heart	-	Passes the messages of the brain
Spinal cord	-	Primary organ of the respiratory system

18. Write the energy changes that take place in the following devices.

Device	Energy changes that take place
Electric fan	
Television	

19. Give examples for the following.

- a) Hard material : _____, _____.
- b) Soft material : _____, _____.
- c) Flexible material : _____, _____.

20. Write the type of change that occurs in the following observations.

Events	Reversible change / Irreversible change
Melting of ice cubes	
Rice becoming cooked rice	
Stretching a rubber band	
Bud becoming flower	
Stretching a spring	
Butter becoming ghee	