



KSHATRIYA VIDHYASALAMATRIC. HR. SEC. SCHOOL

Second Mid Term Exam – November 2023

SCIENCE (Lesson-1,3,4)

Time : 1.30Hours

Marks: 50

Std: VII

Reg.No.:

--	--	--	--	--	--

I. Choose the correct answers.

[10×1 = 10]

- International unit of measuring temperature is
 - Kelvin
 - Fahrenheit
 - Celsius
 - Joule
- The body temperature of a healthy man is
 - 0°C
 - 37°C
 - 98°C
 - 100°C
- In thermometer when bulb comes in contact with hot object, liquid inside it
 - expands
 - contracts
 - remains same
 - none of above
- When a woolen yarn is knitted to get a sweater, the change can be classified as _____.
 - physical change
 - chemical change
 - endothermic change
 - exothermic change
- The chemical change is _____.
 - water to clouds
 - growth of a tree
 - cow dung to bio-gas
 - ice-cream to molten ice-cream
- _____ helps in cell division
 - Endoplasmic reticulum
 - Golgi complex
 - Centriole
 - Nucleus
- Which one of the following is not an unicellular organism?
 - Yeast
 - Amoeba
 - Spirogyra
 - Bacteria
- Which part of the cell is called the brain of the cell?
 - Lysosome
 - Ribosome
 - Mitochondria
 - Nucleus
- Under the microscope Priya observes a cell that has a cell wall and distinct nucleus. The cell that she observes is _____.
 - a plant cell
 - an animal cell
 - a nerve cell
 - a bacterial cell
- The unit of measurement used for expressing dimension (size) of cell is _____.
 - centimeter
 - millimeter
 - micrometer
 - meter

II. Fill in the blanks.

[5 × 1 = 5]

- At room temperature Mercury is in _____ state.
- The common laboratory thermometer is a _____ thermometer.
- Filling up a balloon with hot air is a _____ change.
- The instrument used to observe the cell is _____.
- Cytoplasm plus nucleoplasm is equal to _____.

III. True or False. If false, give the correct answer.

[5 × 1 = 5]

- Cutting of cloth is an example of a periodic change.
- Taking a glass of water and freezing it by placing it in the freezer is a chemical change.
- Tarnishing of silver is an example of endothermic change.
- Nerve cell is the longest cell.
- Cell membrane is fully permeable

IV. Match the following.

[5 × 1 = 5]

- | | | |
|--------------------------------|---|------------------|
| 21) Clinical thermometer | - | A form of energy |
| 22) Heat | - | 100°C |
| 23) Boiling point of water | - | Kink |
| 24) Food producer (plant cell) | - | Mitochondria |
| 25) Energy producer | - | Chloroplasts |

V. Analogy.**[3 × 1 = 3]**

- 26) Physical Change : Boiling :: Chemical Change : _____.
- 27) Forest fire : _____ change :: Change in period in a school : periodic change
- 28) Cell wall : plant cell :: centriole : _____.

VI. Very short answer type question.**[2 × 1 = 2]**

- 29) Why do we jerk a clinical thermometer before we measure the body temperature?
 30) State two examples of periodic changes.

VII. Give Short answer. (Any Five)**[5 × 2 = 10]**

- 31) Why do we use Mercury in thermometers? Can water be used instead of mercury?
 What are the problems in using it?
- 32) The body temperature of Srinath is 99⁰F. Is he suffering from fever? If so, why?
- 33) Distinguish physical and chemical changes.
- 34) Is solar eclipse a periodic change? Give your reason.
- 35) What are the functions of cell wall in plant cell?
- 36) Why lysosomes are known as scavengers of the cell?

VIII. Long Answer type question.**[2 × 5 = 10]**

- 37) a) Draw the diagram of a clinical thermometer and label its parts.

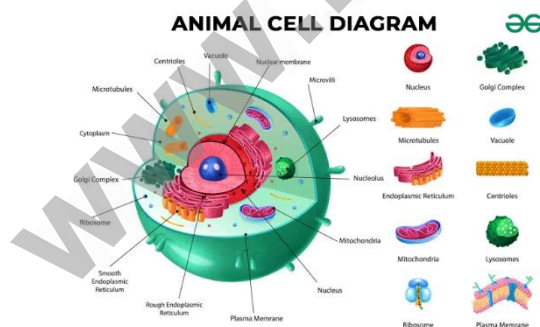
(OR)

- b) Explain the following statement: Digestion is a chemical change.

- 38) a) Write about any three organelles in detail.

(OR)

- b) In a situation, how to explain, while your friend ask what is this, never seen before?

**Prepared By****A.Muthuganesh., M.Sc., M.Phil., B.Ed., PhD.,****Department of Physics,****K. V. S. Matric. Hr. Sec. School,****Thoothukudi – 628002.**