

V

## COMMON SECOND MID - TERM TEST - NOV. 2019

## STANDARD - VI

Reg.No. 

--	--	--	--	--

Time : 2.00 hrs

## SCIENCE

Marks: 60

## PART - A

## I. Choose the best answer:

10×1=10

1. The unit of heat is \_\_\_\_\_.  
a) newton                      b) joule                      c) Volt                      d) celsius
2. Normal body temperature of Human is \_\_\_\_\_.  
a) 39°C                      b) 38°C                      c) 37°C                      d) 40°C
3. \_\_\_\_\_ is a good Conductor.  
a) Silver                      b) Wood                      c) rubber                      d) plastic
4. \_\_\_\_\_ is a kind of fish which is able to produce electric Current.  
a) Eel                      b) Whale                      c) Shark                      d) Dolphin
5. When ice melts to form water, Change occurs in its \_\_\_\_\_.  
a) Position                      b) Colour                      c) State                      d) Composition
6. The change of state from solid to gas directly is called \_\_\_\_\_.  
a) Melting                      b) Sublimation                      c) Freezing                      d) Vapourisation
7. Making idly from batter is \_\_\_\_\_.  
a) a reversible change                      b) a fast change ✓  
c) a slow change                      d) an irreversible change.
8. A 'Control centre' of the eukaryotic cell is \_\_\_\_\_.  
a) Cell wall                      b) Nucleus                      c) Vacuoles                      d) Chloroplast
9. Which is called the 'Power house of the cell' \_\_\_\_\_.  
a) Cytoplasm                      b) Chloroplasts                      c) Mitochondria                      d) Cell Membrane
10. In Human body the \_\_\_\_\_ cells are believed to be the longest cells.  
a) Nerve cell                      b) Blood cell                      c) Muscle cell                      d) None of the above

## PART - B

Short answer : Answer any fifteen of the following questions.

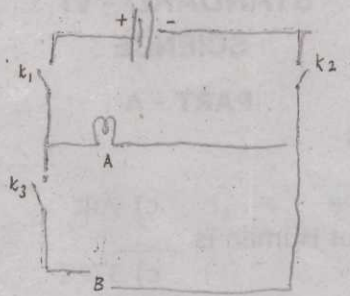
15×2=30

11. What is temperature?
12. Make a list of electrical equipment at home which we get heat from.
13. Analogy:  
a) Heat : Joule :: Temperature : \_\_\_\_\_  
b) Ice cube : 0°C :: Boiling Water : \_\_\_\_\_
14. Match the following:  
a) Source of Heat - Centigrade ✓  
b) Thermal Equilibrium - Coldest temperature ✓  
c) Celsius - No heat flow ✓  
d) Antarctic - Sun ✓
15. True or false . If false, give the correct statement.  
a) Thermal expansion is always a nuisance. true  
b) Steam is formed when heat is released from water. false
16. Name the types of Circuits.
17. Draw the Circuit diagram for series Connection.
18. Circle the odd one out. Give reason for your choice.  
[Switch, Bulb, Battery, Generator]
19. What is the source of electricity?

2

VI - Science

20. In the given Circuit diagram, which of the given Switch (s) should be closed. So that only the bulb "A" glows.



21. What is a Solution?

22. Fill it:

- a) Magnet attracts iron needle. This is \_\_\_\_\_ change. [a reversible/ an irreversible]  
 b) Bursting of fire crackers is a \_\_\_\_\_ change whereas germination of seeds is a \_\_\_\_\_ change. [slow / fast]

23. What is a Change?

24. You are given some Candle wax. can you make a Candle doll from it? What kind of change is this?

25. Distinguish physical change and Chemical change.

26. Why cells are called buildings blocks of life?

27. Match the following:

- |                        |   |                  |   |
|------------------------|---|------------------|---|
| a) Food producer       | - | Cell membrane    | 3 |
| b) Gate of the Nucleus | - | Mitochondria     | 4 |
| c) Gate of the cell    | - | Nucleus          | 5 |
| d) Energy producer     | - | Chloroplasts     | 1 |
| <i>cell wall</i>       | - | Nuclear membrane | 2 |

28. What are the essential Components of a cell.

29. Fill in the blanks:

- a) The Term "Cell" was Coined by WALL.  
 b) The egg of an Ostrich is the hen single cell.

30. Arrange in a Correct Sequence: B

- a) Elephant, Cow, Bacteria, Mango, Rose plant.  
 b) Hen Egg, Ostrich Egg, Insect Egg.

### PART - C

**Note : Answer any four questions by choosing one question from each section.** **4×5=20**

#### SECTION - 1

31. What is thermal expansion? Write the uses of thermal expansion.  
 32. Distinguish between heat and temperature.

#### SECTION - 2

33. Tabulate the different Components of an electric circuit and their respective symbols.  
 34. Write short notes on Conductors and Insulators.

#### SECTION - 3

35. What type of changes is associated with germination of seed? Explain.  
 36. Give one example in each case that happens around you.  
 a) Slow and fast change.  
 b) Natural and Man-made change  
 c) Physical and chemical change.

#### SECTION - 4

37. Tabulate any five cell organelles and their function.  
 38. Draw a plant cell and label its parts.