

B THIRD TERM SUMMATIVE EXAM-2024

Standard - VII

Time : 2.00 hrs

ENGLISH

Marks: 60

3×1=3

I. Match the correct Synonyms:-

- 1) Gazing - Success
- 2) Achievement - Tiresome
- 3) Tedious - look

3×1=3

II. Match the correct Antonyms:-

- 4) Rapidly × Start
- 5) Refused × slowly
- 6) Halt × Willing

4×1=4

III. Match the Phrasal verbs with their meaning:-

- 7) Put to flight - To leave a bus
- 8) Top-flight - To go somewhere for short break.
- 9) Set - out - To cause someone to flee
- 10) Get - off - Enjoy your flight

4×1=4

IV. Syllabify the following words:-

- 11) Ten
- 12) Picture
- 13) Family
- 14) Book

1×2=2

V. Punctuate the following sentence:-

- 15) i am tired mohana said to her Aunt.

2×2=4

VI. Change into Indirect Speech:-

- 16) Mala said, "I cannot come"
- 17) I said, "It is too late"

3×2=6

VII. Answer any three of the following questions:-

- 18) Who inhabited the Jungles that the train passed through?
- 19) What was the reaction of the inhabitants?
- 20) What is the duty of a Purser?
- 21) Name the schools and colleges Neerja studied in?
- 22) Why did Neerja alert the Pilots?

1×4=4

VIII. Answer any one of the following questions:-

- 23) Describe the Elephant driver in your own words?
- 24) How was Neerja honoured by various Government?

1×5=5

IX. Quote the poem "Sea-Fever":-

- 25) From: "I must go down
- To:..... breaking

VII ENGLISH

(2)

X. Read the poetic lines and answer the following questions: 5×1=5

- 26) It's part of his hours, his days and his ears
Back of his smiles and behind his tears
Courage is more than a daring deed
It's the breath of life and a strong man's creed
- Pick out the alliterated words?
 - Find out the Rhyming Words?
 - Find out the Rhyming Scheme?
 - What does "tears" mean?
 - Who is the Poet.

5×1=5

XI. Find out the character/speaker:-

- Don't worry, Madam, it's only a warning.
- Stop ship. Drop anchor. Quick.
- Wake up Child
- A man fell into the sea. Please save him.
- He'll have to be given artificial respiration and kept warm.

5×1=5

XII. Fill in the blanks with correct option:-

- Sindbad decided to sail to the _____ (Persian Gulf/Mexican Gulf) with some goods.
- He was being tossed by powerful waves and was thrown on _____ (island/peninsula)
- The men in the cave were all _____ (Ministers/slaves) of the king.
- The King was a _____ (noble and kind / mean and cruel) person.
- The King gave many valuable _____ (gifts/rewards) to sindbad.

5×1=5

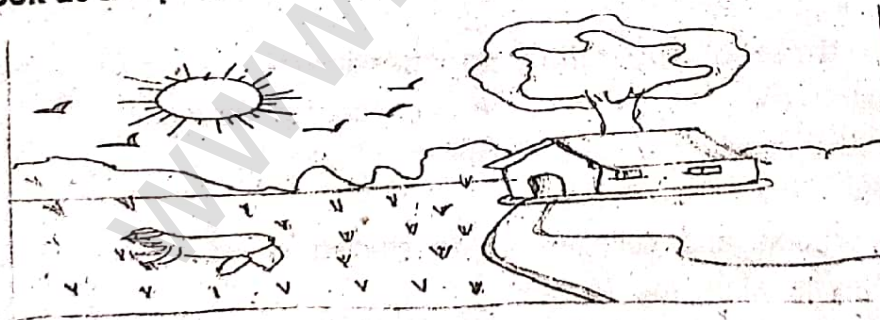
XIII. Re-arrange the jumbled sentences:-

- Jane Eyre was tortured by her aunt Mrs.Reed
- Jane Eyre was an Orphan
- After overcoming many sufferings she was very happy
- She was sent to Lowood charity school
- She graduated and became a teacher there.

5×1=5

XIV. Look at the picture and answer the following Questions

38)



- Is it Day time (or) Night time?
- Who is working in the Paddy Field?
- How many windows are there in the house?
- Do you like this Picture?
- Give suitable title to this Picture.

****/****