

NEET - C18 - BODY FLUIDS AND CIRCULATION

1. Which one represents pulmonary circulation

- A. Left auricle (oxygenated blood) →lungs (deoxygenated blood) →Right auricle
 B. Left auricle (deoxygenated blood) → (oxygenated blood) →auricle
 C. Left auricle (oxygenated blood) →blood) → lungs(deoxygenated Blood) →Left auricle.
 D. Right auricle(deoxygenated blood) →lungs (oxygenated blood) →Left auricle

2. Mitral/Bicuspid valve connects.

- A. Left atrium and left ventricle
 B. Left atrium and right ventricle
 C. Right atrium and left ventricle
 D. Right atrium and right ventricle

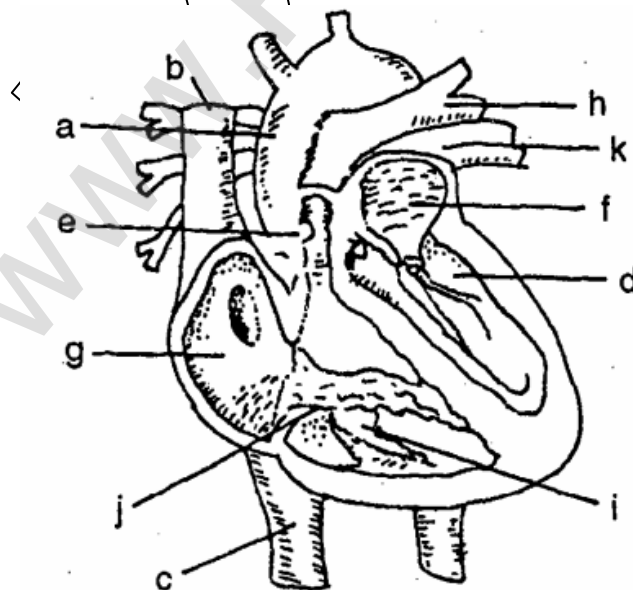
3. 'Dup' sound is produced during closure of

- A. Semilunar valves
 B. Bicuspid valve
 C. Tricuspid valve
 D. Both B and C.

4. Heparin is synthesized in

- A. Liver
 B. Kidney
 C. Saliva
 D. Pancreas

5. In the diagram of the vertical section of human heart given below certain parts have been indicated by alphabets. Choose the answer in which these alphabets have been correctly matched with the parts which they indicate



S.THIYAGARAJAN. M.SC., M.PHIL., B.Ed.,

PH: 9944664846

Magalingapuram, Pollachi.

- A. a = Aorta, b = Superior vena cava c = Inferior vena cava, d = Left ventricle
e = Semilunar valves, f = Left auricle g = Right auricle, h = Pulmonary artery
i = Right ventricle, j = Tricuspid valve k = Pulmonary vein.
- B. a = Aorta, b = Superior vena cava c = Inferior vena cava, d = Right ventricle
e = Tricuspid and Mitral valves, f = Right auricle, g = Left auricle, h = Pulmonary vein,
i = Left ventricle, j = Semilunar valves, k = Pulmonary artery.
- C. a = Aorta, b = Pulmonary artery c = Pulmonary veins, d = Left auricle e = Tricuspid and Mitral valves, f = Left ventricle, g = Right ventricle, h = Inferior vena cava, i = Right auricle, j = Semi lunar valves k = Superior vena cava
- D. a = Aorta, b = Pulmonary vein, c = Pulmonary arteries, d = Left ventricle
e = Semilunar valves, f = Left auricle, g = Right auricle h = Superior vena cava,
i = Right ventricle, j = Tricuspid valves k = Inferior vena cava.

6. Heart beat is accelerated by

- A. Sympathetic nerves and acetylcholine B. Cranial nerves and adrenaline
C. Cranial nerves and acetylcholine D. Sympathetic nerves and epinephrine.

7. Blood protein which initiates blood coagulation is

- A. Prothrombin B. Thrombin
C. Fibrinogen D. Fibrin.

8. Which cranial nerve supplies heart?

- A. Vagus B. Facial
C. Trochlear D. Auditory.

9. Arteries carry oxygenated blood except

- A. Pulmonary B. Cardiac
C. Hepatic D. Systemic

10. Heart beat is initiated by electrical impulses generated in

- A. SAN B. AVN
C. Interauricular septum D. Auriculoventricular septum

11. Heart is enclosed in transparent membrane called

- A. Heart membrane B. Pericardium
C. Mucous membrane D. Cell membrane.

S.THIYAGARAJAN. M.SC., M.PHIL., B.Ed.,

PH: 9944664846

Magalingapuram, Pollachi.

Kindly Send Me Your Key Answers to Our email id - padasalai.net@gmail.com

12. Heart covering is

- A. Peritoneum
- B. Pleural membrane
- C. Pericardium
- D. Visceral membrane

13. Stethoscope was invented by

- A. Waksman
- B. Koch
- C. Laennec
- D. Jenner

14. Contraction of right ventricle pumps blood into

- A. Dorsal aorta
- B. Pulmonary artery
- C. Pulmonary vein
- D. Coronary artery

15. How many double circulations are normally calculated by human heart per minute

- A. Seventy two
- B. Thirty six
- C. Eight
- D. Sixteen

16. Wall of heart is covered externally by

- A. Epicardium
- B. Epithelium
- C. Endothelium
- D. Glisson's capsule.

17. Lubb-dupp sounds are due to

- A. Closing of tricuspid and bicuspid valves
- B. Blood flow through aorta
- C. Closing of tricuspid and bicuspid valves followed by closing of semilunar valves
- D. Closing of semilunar valves.

18. The important component of blood which gives red color is

- A. Haemoglobin
- B. Hydrochloric acid
- C. Safranin stain
- D. Iron.

19. Thickening of the wall of arteries is known as

- A. Thrombosis
- B. Arteriosclerosis
- C. Atherosclerosis
- D. Heart attack

20. In normal adult man B.P. is

- A. 100/80 mm. of Hg
- B. 120/80 mm. of Hg
- C. 100/120 mm. of Hg
- D. 80/120 mm. of Hg.

S.THIYAGARAJAN. M.SC., M.PHIL., B.Ed.,

PH: 9944664846

Magalingapuram, Pollachi.

Kindly Send Me Your Key Answers to Our email id - padasalai.net@gmail.com

21. The ECG is used to detect

- A. Heart attack
- B. Heart block
- C. Coronary thrombosis
- D. All the above.

22. Which one of the following has an open circulatory system?

- A. Octopus
- B. Pheretima
- C. Periplaneta
- D. Hirudinaria

23. The mitral valve is also known as

- A. Tricuspid
- B. Bicuspid
- C. Semilunar
- D. None of these.

24. Find the matching pair

- A. Lubb - sharp closure of AV valves at beginning of ventricular systole
- B. Dup - sudden opening of semilunar valves at the beginning of ventricular systole
- C. Pulsation of radial artery-valves in blood vessels
- D. Initiation of heart beat - Purkinje fibres.

25. Cardiac output is amount of blood

- A. Received by heart per minute
- B. Pumped by each ventricle per minute
- C. Pumped by both ventricles per Second
- D. Pumped by left atrium per hour.

NEET - C18 - BODY FLUIDS AND CIRCULATION - KEY

1. D	2. A	3. A	4. A	5. A
6. D	7. A	8. A	9. A	10. A
11. B	12. C	13. C	14. B	15. A
16. A	17. C	18. A	19. B	20. B
21. D	22. C	23. B	24. A	25. B

www.Padasalai.Net