

SRIMAAN COACHING CENTRE-TRICHY-TN-MAWS-SANITARY

INSPECTOR (PUBLIC HEALTH & SANITATION)-QUESTION

BANK & STUDY MATERIAL-TO CONTACT: 8072230063.

2024-25

SRIMAAN

SRIMAAN

TN MAWS

MUNICIPAL ADMINISTRATION & WATER SUPPLY DEPARTMENT-(MAWS)

PUBLIC HEALTH & SANITATION (SANITARY INSPECTOR)

QUESTION BANK

TN-MAWS STUDY MATERIALS

**CIVIL/ MECHANICAL / ELECTRICAL / TOWN PLANNING/
ARCHITECTURE / PUBLIC HEALTH & SANITATION**

**TRB-ASSISTANT PROFESSOR-(ALL SUBJECT) STUDY MATERIAL
AVAILABLE.**

**PG-TRB STUDY MATERIALS:-TAMIL/ENGLISH/ MATHEMATICS/ PHYSICS
CHEMISTRY/ COMMERCE (T/M & E/M)/ BOTANY (T/M & E/M)/ ZOOLOGY
HISTORY (T/E)/ ECONOMICS (T/E)/ GEOGRAPHY / BIO-CHEMISTRY**

PGTRB-COMPUTER INSTRUCTOR GRADE-I -TO CONTACT -8072230063.

SRIMAAN COACHING CENTRE-TRICHY-TN-MAWS-SANITARY

INSPECTOR (PUBLIC HEALTH & SANITATION)-QUESTION

BANK & STUDY MATERIAL-TO CONTACT: 8072230063.

2024-25

SRIMAAN

TRB-POLYTECHNIC LECTURER MATERIALS:

**MATHEMATICS / ENGLISH / PHYSICS / CHEMISTRY / COMPUTER SCIENCE / IT /
EEE / ECE / EIE / ICE / MECHANICAL / CIVIL / MOP AVAILABLE.**

TRB-ASST.PROFESSOR STUDY MATERIAL AVAILABLE.

SCERT/DIET/GTTI LECTURER STUDY MATERIAL AVAILABLE.

UG-TRB & SGT: (ALL SUBJECT) STUDY MATERIALS AVAILABLE.

DEO & BEO (T/M & E/M) STUDY MATERIALS AVAILABLE.

**PG-TRB: COMPUTER INSTRUCTOR GRADE-1 -FULL
STUDY MATERIAL WITH QUESTION BANK AVAILABLE**

**TNPSC-ASSISTANT DIRECTOR OF CO-OPERATIVE AUDIT STUDY
MATERIAL AVAILABLE.**

TNEB-(ASSESSOR/AE/JA) MATERIALS WITH QUESTION BANK AVAILABLE

**UG-TRB / PG-TRB / TRB-ASST.PROF / TN-MAWS
MATERIALS ARE SENDING THROUGH COURIER.**

TO CONTACT

8072230063

**PG-TRB STUDY MATERIALS:-TAMIL / ENGLISH / MATHEMATICS / PHYSICS
CHEMISTRY / COMMERCE (T/M & E/M) / BOTANY (T/M & E/M) / ZOOLOGY
HISTORY (T/E) / ECONOMICS (T/E) / GEOGRAPHY / BIO-CHEMISTRY**

PGTRB-COMPUTER INSTRUCTOR GRADE-I -TO CONTACT -8072230063.

SRIMAAN COACHING CENTRE-TRICHY- TN-MAWS-SANITARY**2024-25****INSPECTOR-QUESTION BANK-TO CONTACT:8072230063.****SRIMAAN****SRIMAAN COACHING CENTRE-TRICHY.****TO CONTACT: 8072230063.****TN-MAWS****SANITARY INSPECTOR****PUBLIC HEALTH & SANITATION****QUESTION BANK****DURATION : ½ hr****UNIT-1-CHEMISTRY****Max.Marks:75**

1. In pesticide, the root word is latin word "cide" which means

- a. To harm b.To control c.To kill d.To suicide **Answer: c)**

2. Which of the following is not a pesticide?

- a.Boric acid b.Allethrin c.Rozol d.Alprazolam **Answer: d)**

3. The most commonly used pesticide toxaphene is

- a.Carbamate b.Organophosphate c.Organochlorine d.Antibiotic **Answer: c)**

4. Pyrethrum, a naturally occurring pesticide is derived from

- a.rocus b.Daffodil c.Chrysanthemum d.Butter cup **Answer: c)**

SRIMAAN STUDY MATERIALS: TET / PG-TRB / UG-TRB (BT & BRTE & SGT) / BEO & DEO**TRB-POLYTECHNIC-LECTURER / COMPUTER INSTRUCTOR / TN-MAWS/ TNEB-ASSESSOR-****SRIMAAN****A.E/J.A / SCERT / DIET / GTTI / TNUSRB / TNPSC(GROUP IV/VAO/JSO) AVAILABLE-****8072230063****TO CONTACT: 8072230063.**

SRIMAAN COACHING CENTRE-TRICHY- TN-MAWS-SANITARY**2024-25****INSPECTOR-QUESTION BANK-TO CONTACT:8072230063.****SRIMAAN**

5. DDE, a insecticide is a acronym for

- a. Dichloro diphenyldichloro ethylene b. Dibromo diphenyldichloro ethylene
c. ichloro diphenyldich loroethenyl d. Dibromo diphenyldichloro ethenyl

Answer: a)

6. The active ingredient present in Baygon is

- a. ransfluthrin b. Malathion c. Carbofuran d. Aldicarb

Answer: a)

7. DDT is

- a. Biodegradable b. Non biodegradable c. Growth enhancer d. Tranquilizer

Answer: b)

8. The most commonly used pesticide is benzene hexachloride(BHC). It belongs to the

- a. Organophosphates b. Triazine c. Organochlorine d. Carbamate

Answer: c)

10. Pesticides are harmful to human beings as they attack on

- a. uscular system b. Nervous system
c. Respiratory system d. No effect

Answer: b) and c)

11: Aldicarb is the chemical present in

- a. Aldrin b. Endrin c. Temik d. DDT

Answer: a)

12. Food adulteration is described as the activity of adulterating food or contaminating food ingredients by introducing a few compounds together referred to as the?

- a) Adulterants b) Decomposed c) Nutrients d) Consumption

Answer: a.

13. The addition of these adulterants lowers the _____ value of food.

- a) Substance b) Quality c) Nutrients d) Quantity

Answer: c.

14. Which of the following is a coffee powder adulterant?

- a) Water and starch powder b) Artificial colouring agents

SRIMAAN STUDY MATERIALS: TET / PG-TRB / UG-TRB (BT & BRTE & SGT) / BEO & DEO**TRB-POLYTECHNIC-LECTURER / COMPUTER INSTRUCTOR / TN-MAWS / TNEB-ASSESSOR-****SRIMAAN****A.E/J.A / SCERT / DIET / GTTI / TNUSRB / TNPSC (GROUP IV/VAO/JSO) AVAILABLE-****8072230063****TO CONTACT: 8072230063.**

SRIMAAN COACHING CENTRE-TRICHY- TN-MAWS-SANITARY**2024-25****INSPECTOR-QUESTION BANK-TO CONTACT:8072230063.****SRIMAAN**

c) Dyes, chemical and Lead Chromate d) Chicory, tamarind seeds powder Answer: d.

15. This approach uses plasmolysis to dehydrate microbial cells, causing them to perish.

a) Heating b) Smoking c) Pasteurisation d) Sugaring Answer: d.

16. The term “added substance” refers to a substance that is added with the goal of affecting the nature and quality of food.

a) Food poison b) Food adulterant c) Food material d) Food contaminant Answer: b.

17. PFA is abbreviated as

a) Prevention of Food Act b) Protection of Food Act
c) Prevention of Food Adulteration Act d) None of the above Answer: c.

18. Which of these is a Honey Adulterant?

a) Washing soda, chalk powder. b) Molasses, dextrose, sugar and corn syrups.
c) Pumpkin pulp, non-edible artificial colours, and flavours.
d) Cassia bark Answer: b.

19. When does the PFA Act say that food is adulterated?

a) If it is obtained from a diseased animal b) If spices are sold without their essence
c) If any ingredient is injurious to health d) All of the above Answer : d.

20. What is an example of a biological hazard?

a) Salmonella b) Antibiotics c) Cleaners d) Dirt Answer: a.

21. Adulterants are substances or low-quality goods that are intentionally added to food for economic or technical reasons.

SRIMAAN STUDY MATERIALS: TET / PG-TRB / UG-TRB (BT & BRTE & SGT) / BEO & DEO

TRB-POLYTECHNIC-LECTURER / COMPUTER INSTRUCTOR / TN-MAWS / TNEB-ASSESSOR-

SRIMAAN

A.E/J.A / SCERT / DIET / GTTI / TNUSRB / TNPSC (GROUP IV/VAO/JSO) AVAILABLE-

8072230063

TO CONTACT: 8072230063.

SRIMAAN COACHING CENTRE-TRICHY- TN-MAWS-SANITARY**2024-25****INSPECTOR-QUESTION BANK-TO CONTACT:8072230063.****SRIMAAN**

a) Can be true or false b) Cannot say c) TRUE d) FALSE Answer: a.

22. According to Section 3 of the Food Safety & Standards Act 2006, if a food item offered in the market contains any inferior or cheaper components, whether entirely or partially, that are harmful to one's health, such products are referred to as "food articles."

a) Sub-standard b) Misbranded c) Partly sub-standard d) Unsafe Answer: d.

23. Which one of the following is a contaminant?

a).Urea b).Pesticides c). Iron filings in tea d) All of the mentioned Answer: d.

24. Adulteration occurs at what point in the process?

a) Producer b) Distributor c) Retailer d) All of the mentioned Answer: d.

25. What are the reasons for the addition of adulterants?

a) To extend the life of items. For instance, urea b) To improve flavor color and appearance
c) To sell lesser quantity at the same price d) All the mentioned Answer: d.

26. Adulterant detection methods include_____

a) Visual tests b) Chemical tests c) Physical tests d) All of the mentioned Answer: d.

27_____ is a material that is added to food with the goal of changing its nature and quality.

a) Food poison b) Food adulterant c) Food contaminant d) Food material Answer: d.

28. This statement about Potassium Bromate is/are true

Potassium Bromate is a category 2B carcinogen

Potassium Bromate improves dough strength, resulting in faster rising and a more consistent finish on baked goods.

They are allowed up to 50 parts per million by the Food Safety and Standards Authority of India (FSSAI).

SRIMAAN STUDY MATERIALS: TET / PG-TRB / UG-TRB (BT & BRTE & SGT) / BEO & DEO

TRB-POLYTECHNIC-LECTURER / COMPUTER INSTRUCTOR / TN-MAWS / TNEB-ASSESSOR-

SRIMAAN

A.E/J.A / SCERT / DIET / GTTI / TNUSRB / TNPSC (GROUP IV/VAO/JSO) AVAILABLE-

8072230063

TO CONTACT: 8072230063.

SRIMAAN COACHING CENTRE-TRICHY- TN-MAWS-SANITARY**2024-25****INSPECTOR-QUESTION BANK-TO CONTACT:8072230063.****SRIMAAN**

(a) 1,2 (b) 1,3 (c) 2,3 (d) All of these Answer : d.

29. According to Werner's theory of coordination compounds,

- a. Primary valency is ionizable b. Secondary valency is ionizable
c. Primary and secondary valencies are ionizable d. Neither primary nor secondary valency is ionizable

Ans: A.

30. Among the following which are ambidentate ligands?

- a. SCN^- b. NO_3^- c. NO_2^- d. $\text{C}_2\text{O}_4^{2-}$
a. (i) and (iii) b. (i) and (iv) c. (ii) and (iii) d. (ii) and (iv) Ans: A. (i) and (iii)

31. A coordination compound $\text{CrCl}_3 \cdot 4\text{H}_2\text{O}$ gives a white precipitate of AgCl with AgNO_3 . The molar conductance of the compound corresponds to two ions. The structural formula of the compound is

- a. $[\text{Cr}(\text{H}_2\text{O})_4\text{Cl}_3]$ b. $[\text{Cr}(\text{H}_2\text{O})_3\text{Cl}_3] \cdot \text{H}_2\text{O}$ c. $[\text{Cr}(\text{H}_2\text{O})_4\text{Cl}_2]\text{Cl}$ d. $[\text{Cr}(\text{H}_2\text{O})_4\text{Cl}]\text{Cl}_2$ Ans: C

32. Identify the statement which is not correct.

- a. Coordination compounds are mainly known for transition metals.
b. Coordination number and oxidation state of metal are the same.
c. A ligand donates at least one electron pair to the metal atom to form a bond.
d. $[\text{Co}(\text{NH}_3)_4\text{Cl}_2]^+$ is a heteroleptic complex. Ans: B

33. The coordination number and the oxidation state of the element E in the complex $[\text{E}(\text{en})_2(\text{C}_2\text{O}_4)]\text{NO}_2$ (where (en) is ethylenediamine) are, respectively

- a. 6 and 3 b. 6 and 2 c. 4 and 2 d. 4 and 3 Ans: A

34. The charges x and y on the following ions are,



**SRIMAAN STUDY MATERIALS: TET / PG-TRB / UG-TRB (BT & BRTE & SGT) / BEO & DEO
TRB-POLYTECHNIC-LECTURER / COMPUTER INSTRUCTOR / TN-MAWS / TNEB-ASSESSOR-
A.E/J.A / SCERT / DIET / GTTI / TNUSRB / TNPSC (GROUP IV/VAO/JSO) AVAILABLE-
TO CONTACT: 8072230063.**

SRIMAAN**8072230063**



(Oxidation state of Co is +3 and Fe is +2 in their respective complexes.)

a. $x = +1, y = -1$ b. $x = -1, y = +3$ c. $x = -1, y = -4$ d. $x = -2, y = -3$ Ans: C

35. Give a reason for the statement. '[Ni(CN)₄]²⁻ is diamagnetic while [NiCl₄]²⁻ is paramagnetic in nature.'

a. In [NiCl₄]²⁻, no unpaired electrons are present while in [Ni(CN)₄]²⁻ two unpaired electrons are present.

b. In [Ni(CN)₄]²⁻, no unpaired electrons are present while in [NiCl₄]²⁻ two unpaired electrons are present.

c. [NiCl₄]²⁻ shows dsp² hybridization hence it is paramagnetic.

d. [Ni(CN)₄]²⁻ shows sp³ hybridization hence it is diamagnetic. Ans: B

36. Among the following compounds which are both paramagnetic and coloured?

a. K₂Cr₂O₇ b. [Co(SO)₄] c. (NH₄)₂[TiCl₆] d. K₃[Cu(CN)₄] Ans: B

37. CuSO₄.5H₂O is blue in colour while CuSO₄ is colourless due to

a. Presence of strong field ligand in CuSO₄.5H₂O.

b. Absence of water (ligand), d – d transitions are not possible in CuSO₄.

c. Anhydrous CuSO₄ undergoes d – d transitions due to crystal field splitting.

d. Colour is lost due to the loss of unpaired electrons. Ans: B

38. If Pt in PtCl₄.2HCl has a secondary valence of 6, how many mols of AgCl will 1 mol of the compound precipitate with excess AgNO₃?

a. 0 b. 1 c. 2 d. 4 Ans: A

39. What is the sum of the oxidation number of cobalt in [Co(H₂O)(CN)(en)₂]²⁺ and [CoBr₂(en)₂]⁺?

a. +3 b. +5 c. +4 d. +6 Ans: D

40. Which of the following is the correct formulation of the entity according to IUPAC?

SRIMAAN COACHING CENTRE-TRICHY- TN-MAWS-SANITARY**2024-25****INSPECTOR-QUESTION BANK-TO CONTACT:8072230063.****SRIMAAN**

a. $(\text{Co}(\text{CN})_6)^{3-}$ b. $[\text{Co}(\text{CN})_6]^{3-}$ c. $[\text{Co}(\text{CN})_6]^{3-}$ d. $[\text{Co}(\text{CN})_6]^{-3}$ Ans: B

41. A coordination complex $[\text{MX}_2\text{L}_2]$, has a CN=4 and two unidentate ligands X and L. When the two L ligands are arranged opposite to each other in their geometry, it is called _____ isomer.

a. Cis b. Trans c. Fac d. Mer Ans: A

42. Which of the following compounds has enantiomers?

a. $\text{K}_3[\text{Fe}(\text{CN})_6]$ b. $\text{K}_3[\text{Al}(\text{C}_2\text{O}_4)_3]$ c. $\text{K}_2[\text{Zn}(\text{OH})_4]$ d. $\text{K}_2[\text{PdCl}_4]$ Ans: B

43. Which of the following compounds does not have a coordination isomer?

a. $[\text{Ag}(\text{NH}_3)_2][\text{Ag}(\text{CN})_2]$ b. $[\text{Cr}(\text{NH}_3)_6][\text{Co}(\text{CN})_6]$
 c. $[\text{Zn}(\text{NH}_3)_4][\text{PtCl}_4]$ d. $[\text{Cu}(\text{NH}_3)_4][\text{FeCl}_4]$ Ans: A

44. Identify the correct naming for $\text{K}_3[\text{Fe}(\text{CN})_6]$.

a. Tripotassium hexacyanidoferrate(III) b. Potassium hexacyanoferrate(III)
 c. Tripotassium hexacyanoferrate(III) d. Potassium hexacyanidoferrate(III) Ans: D

45. Which of the following compounds has a meridional isomer?

a. $[\text{Fe}(\text{NO})_5\text{Br}]^+$ b. $[\text{Al}(\text{CO})_3(\text{NO})_3]$
 c. $[\text{K}(\text{NH}_3)_4(\text{NO})_2]^+$ d. $[\text{Fe}(\text{H}_2\text{O})_2(\text{CO})_2(\text{NO})_2]^{3+}$ Ans: B

46. A coordination complex's core atom/ion is also known as _____

a. Lewis base b. Lewis acid
 c. Bronsted-Lowry acid d. Bronsted-Lowry base Ans: B

47. Which of the following statements about coordination compounds' bonding is incorrect?

a. Crystal Field Theory b. VSEPR Theory
 c. Molecular Orbital Theory d. Valence Bond Theory Ans: B

SRIMAAN STUDY MATERIALS: TET / PG-TRB / UG-TRB (BT & BRTE & SGT) / BEO & DEO

TRB-POLYTECHNIC-LECTURER / COMPUTER INSTRUCTOR / TN-MAWS / TNEB-ASSESSOR-

SRIMAAN

A.E/J.A / SCERT / DIET / GTTI / TNUSRB / TNPSC (GROUP IV/VAO/JSO) AVAILABLE-

8072230063

TO CONTACT: 8072230063.

48. Which of the following statements about a charged coordinating entity is correct?

- a. The sign of the charge is written after the number
- b. The charge of the complex ion is written in parenthesis while naming the entity
- c. The charge is indicated as a subscript outside the square bracket on the right
- d. The charge on the complex ion is depicted along with the counter ion

Ans. A

49. At 25°C, which of the following will not give a positive test for Cl⁻ with AgNO₃(aq)?

- a. COCl₃.5NH₃
- b. COCl₃.6NH₃
- c. COCl₃.3NH₃
- d. COCl₃.4NH₃

Ans. C

49. Pick out the correct statement with respect to [Mn(CN)₂]⁻

- a. It is sp²d² hybridised, tetrahedral
- b. It is d²sp³ hybridised, octahedral
- c. It is dsp² hybridised, square planar
- d. It is sp³d² hybridised octahedral

Ans. B

50. Which of the following is the coordination entity in K₂[Zn(OH)₄]?

- a. K⁺
- b. Zn²⁺
- c. OH⁻
- d. [Zn(OH)₄]²⁻

Ans. D

51. Which of the following cannot be a ligand?

- a. Ni²⁺
- b. Cl⁻
- c. H₂O
- d. NH₃

Ans. A

51. When 0.1 mol CoCl₃(NH₃)₅ is combined with excess AgNO₃, then 0.2 mol AgCl is obtained. The conductivity of the solution suits the

- a. 1:3 electrolyte
- b. 1:1 electrolyte
- c. 3:1 electrolyte
- d. 1:2 electrolyte

Answer: (d)

52. A chelating agent has two or more than two donor atoms to bind to a single metal ion. Which of the following is not a chelating agent?

- a. Thiosulphato
- b. Oxalato
- c. Glycinato
- d. Ethane-1,2-diamine

Answer: (a)

53. IUPAC name of [Pt(NH₃)₂Cl(NO₂)] is

SRIMAAN COACHING CENTRE-TRICHY- TN-MAWS-SANITARY**2024-25****INSPECTOR-QUESTION BANK-TO CONTACT:8072230063.****SRIMAAN**

a. Platinum diamminechloronitrite

b. Chloronitrito-N-ammineplatinum (II)

c. Diamminechloridonitrito-N-platinum (II)

d. Diamminechloronitrito-N-platinum (II) **Answer: (c)**

54. In the complex $[E(en)_2(C_2O_4)]NO_2$ (where (en) is ethylenediamine) _____ are the coordination number and the oxidation state of the element 'E' respectively.

a. 6 and 2

b. 2 and 2

c. 4 and 3

d. 6 and 3

Answer: (d)

55. The sum of coordination number and oxidation number of the metal M in the complex $[M(en)_2(C_2O_4)]Cl$ (where (en) is ethylenediamine) is

a. 9

b. 6

c. 7

d. 8

Answer: (a)

56. Some salts containing two different metallic elements give test for only one of them in solution, such salts are

a. double salts

b. normal salts

c. complex salts

d. None of these

Answer: (c)

57. An example of a sigma bonded organometallic compound is

a. Grignard reagent

b. Ferrocene

c. Cobaltocene

d. Ruthenocene

Answer: (a)

58. Iron carbonyl, $Fe(CO)_5$ is

a. Tetranuclear

b. Mononuclear

c. Dinuclear

d. Trinuclear

Answer: (b)

59. The type of isomerism shown by the complex $[CoCl_2(en)_2]$ is

a. Geometrical isomerism

b. Coordination isomerism

c. Linkage isomerism

d. Ionization isomerism

Answer: (a)

60. Which of the following elements do not form a complex with EDTA?

SRIMAAN STUDY MATERIALS: TET / PG-TRB / UG-TRB (BT & BRTE & SGT) / BEO & DEO**TRB-POLYTECHNIC-LECTURER / COMPUTER INSTRUCTOR / TN-MAWS / TNEB-ASSESSOR-****SRIMAAN****A.E./J.A / SCERT / DIET / GTTI / TNUSRB / TNPSC (GROUP IV/VAO/JSO) AVAILABLE-****8072230063****TO CONTACT: 8072230063.**

SRIMAAN COACHING CENTRE-TRICHY- TN-MAWS-SANITARY**2024-25****INSPECTOR-QUESTION BANK-TO CONTACT:8072230063.****SRIMAAN**

a.Ca

b.Mg

c.Be

d.Sr

Answer: (c)**61.** The sum of the metal M's coordination number and oxidation number in the complex $[M(en)_2 C_2O_4]$. They're

(a) 7

(b) 8

(c) 9

(d) 6

Answer: (c)**62.** At 25°C, which of the following will not give a positive test for Cl^- with $AgNO_3(aq)$?(a) $COCl_3 \cdot 5NH_3$ (b) $COCl_3 \cdot 6NH_3$ c.(c) $COCl_3 \cdot 3NH_3$ d.(d) $COCl_3 \cdot 4NH_3$ **Answer: (c)****63.** Which of the following claims regarding $[CO(CN)_6]^{3-}$ is correct

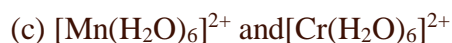
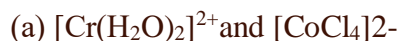
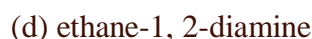
(a) It has 4 unpaired electron, high spin

(b) No unpaired electron, high spin

(c) No unpaired electron, low spin

(d) 4 unpaired electron, low spin

Answer: (c)**64.** When $AgNO_3$ in excess is treated with complexes: $COCl_3 \cdot 6NH_3$, $COCl_3 \cdot 5NH_3$ and $COCl_3 \cdot 4NH_3$, the right order of the stoichiometries of $AgCl$ produced is $COCl_3 \cdot 6NH_3$, $COCl_3 \cdot 5NH_3$, and $COCl_3 \cdot 4NH_3$, respectively.(a) 3 $AgCl$, 1 $AgCl$, 2 $AgCl$ (b) 3 $AgCl$, 2 $AgCl$, 1 $AgCl$ (c) 2 $AgCl$, 3 $AgCl$, 2 $AgCl$ (d) 1 $AgCl$, 3 $AgCl$, 2 $AgCl$ **Answer: (b)****65.** Identify the right statement in relation to $[Mn(CN)_6]^{2-}$ is(a) It is sp^2d^2 hybridized, tetrahedral(b) It is d^2sp^3 hybridized, octahedral(c) It is dsp^2 hybridized, square planar(d) It is sp^3d^2 hybridized octahedral**Answer: (b)****66.** Isomerism in the face and along the meridian will be demonstrated(a) $[Co(NH_3)_3Cl_3]$ (b) $[Co(NH_3)_4Cl_2] Cl$ (c) $[Co(en)_3] Cl_3+$ (d) $[Co(NH_3)_5Cl] Cl_2$ **Answer: (a)****67.** Which of the following has the highest molar conductivity?**SRIMAAN STUDY MATERIALS: TET / PG-TRB / UG-TRB (BT & BRTE & SGT) / BEO & DEO****TRB-POLYTECHNIC-LECTURER / COMPUTER INSTRUCTOR / TN-MAWS / TNEB-ASSESSOR-****SRIMAAN****A.E/J.A / SCERT / DIET / GTTI / TNUSRB / TNPSC (GROUP IV/VAO/JSO) AVAILABLE-****8072230063****TO CONTACT: 8072230063.**

SRIMAAN COACHING CENTRE-TRICHY- TN-MAWS-SANITARY**2024-25****INSPECTOR-QUESTION BANK-TO CONTACT:8072230063.****SRIMAAN****Answer: (c)****68.**(At No. Cr = 24, Mn = 25, Fe = 26, Co = 27) is the pair with the same magnetic moment.**Answer: (b)****69.**The correct order of field strength among the ligands NH_3 , en, CN, and CO is**Answer: (c)****70.**The chelate effect is the stabilization of coordination molecules caused by chelation. Which of the following complex species is the most stable?**Answer: (c)****71.**Coordination compounds exhibit isomerism due to the presence of ambidentate ligands. $[\text{Pd}(\text{C}_6\text{H}_5)_2(\text{SCN})_2]$ and $[\text{Pd}(\text{C}_6\text{H}_5)_2(\text{NCS})_2]$ are two types of palladium complexes.**Answer: (a)****72.** A chelating agent binds to a single metal ion with two or more donor atoms. Which of the following is a chelating agent and which is not?**Answer: (a)****73.**IUPAC name of $[\text{Pt}(\text{NH}_3)_3 \text{Br}(\text{NO}_2) \text{Cl}] \text{Cl}$ is**SRIMAAN STUDY MATERIALS: TET / PG-TRB / UG-TRB (BT & BRTE & SGT) / BEO & DEO****TRB-POLYTECHNIC-LECTURER / COMPUTER INSTRUCTOR / TN-MAWS / TNEB-ASSESSOR-****SRIMAAN****A.E/J.A / SCERT / DIET / GTTI / TNUSRB / TNPSC (GROUP IV/VAO/JSO) AVAILABLE-****8072230063****TO CONTACT: 8072230063.**

SRIMAAN COACHING CENTRE-TRICHY- TN-MAWS-SANITARY**2024-25****INSPECTOR-QUESTION BANK-TO CONTACT:8072230063.****SRIMAAN**

(a) triamine chloro dibromide platinum (IV) chloride

(b) triamine chloridobromidonitrochloride- platinum (IV) chloride

(c) triamine bromido chlorido nitro platinum (IV) chloride

(d) triamine nitro chloro bromo platinum (IV) chloride

Answer: (c)**74.**Trunbull's blue is

(a) Ferricyanide

(b) Ferrous ferricyanide

(c) Ferrocyanide

(d) $\text{Fe}_3[\text{Fe}(\text{CN})_6]_4$ **Answer: (b)****75.**Primary and secondary valency of Pt in $[\text{Pt}(\text{en})_2\text{Cl}_2]$ are

(a) 4, 4

(b) 4, 6

(c) 6, 4

(d) 2, 6

Answer: (d)**TO BE CONTINUED.....****STUDY MATERIALS WITH Q.BANK AVAILABLE****TN-MAWS****CIVIL/ MECHANICAL /ELECTRICAL (EEE & ECE) /****TOWN PLANNING/ ARCHITECTURE /****PUBLIC HEALTH & SANITATION****SANITARY INSPECTOR-QUESTION BANK AVAILABLE.****TRB-ASSISTANT PROFESSOR-(ALL SUBJECT) STUDY MATERIALS AVAILABLE.****TO CONTACT: 8072230063.****SRIMAAN COACHING CENTRE-TRICHY.****SRIMAAN STUDY MATERIALS: TET / PG-TRB / UG-TRB (BT & BRTE & SGT) / BEO & DEO****TRB-POLYTECHNIC-LECTURER / COMPUTER INSTRUCTOR / TN-MAWS/ TNEB-ASSESSOR-****SRIMAAN****A.E/J.A / SCERT / DIET / GTTI / TNUSRB / TNPSC (GROUP IV/VAO/JSO) AVAILABLE-****8072230063****TO CONTACT: 8072230063.**

**SRIMAAN COACHING CENTRE-TRICHY- TET/PG-TRB / UG-TRB
BEO/ DEO/TRB-POLY/ASST.PROF/TN-MAWS /TNEB /SCERT
STUDY MATERIALS AVAILABLE- CONTACT:8072230063.**

**2024-25
SRIMAAN**

**TN-MAWS-MUNICIPAL ADMINISTRATION & WATER SUPPLY
DEPARTMENT-(DEGREE & DIPLOMA) STUDY MATERIALS AVAILABLE.**

**TRB-ASSISTANT PROFESSORS IN GOVERNMENT ARTS AND SCIENCE
COLLEGES & COLLEGES OF EDUCATION STUDY MATERIALS AVAILABLE.**

UG-TRB MATERIALS

GRADUATE TEACHERS / BLOCK RESOURCE TEACHER EDUCATORS (BRTE) & SGT

➤ **UG TRB: TAMIL MATERIAL WITH QUESTION BANK.**

➤ **UG TRB: ENGLISH STUDY MATERIAL +Q. BANK.**

➤ **UG-TRB: MATHEMATICS MATERIAL WITH Q. BANK (E/M)**

➤ **UG TRB: PHYSICS MATERIAL WITH QUESTION BANK (E/M)**

➤ **UG TRB: CHEMISTRY MATERIAL + QUESTION BANK (E/M)**

➤ **UG TRB: HISTORY MATERIAL + Q.BANK (E/M)**

➤ **UG TRB: ZOOLOGY MATERIAL + QUESTION BANK (E/M)**

➤ **UG TRB: BOTANY MATERIAL +QUESTION BANK (T/M& E/M)**

➤ **UG TRB: GEOGRAPHY STUDY MATERIAL (E/M)**

SCERT/DIET/GTTI (LECTURER) STUDY MATERIAL AVAILABLE.

TNPSC-(CESE)-JSO STUDY MATERIAL AVAILABLE.

TANGEDCO (TNEB)-(T/M & E/M)

ASSESSOR/ASSISTANT ENGINEER (A.E)/JUNIOR ASSISTANT (ACCOUNTS)

**SRIMAAN COACHING CENTRE-TRICHY- TET/PG-TRB / UG-TRB
BEO/ DEO/TRB-POLY/ASST.PROF/TN-MAWS /TNEB /SCERT
STUDY MATERIALS AVAILABLE- CONTACT:8072230063.**

**2024-25
SRIMAAN**

PG-TRB MATERIALS

**PG-TRB: COMPUTER INSTRUCTOR-GRADE-I (NEW SYLLABUS)-
2024-2025 STUDY MATERIAL WITH Q.BANK AVAILABLE**

- **PG TRB: TAMIL STUDY MATERIAL +QUESTION BANK (T/M)**
- **PG TRB: ENGLISH MATERIAL WITH QUESTION BANK.**
- **PG-TRB: MATHEMATICS MATERIAL WITH Q.BANK (E/M)**
- **PG TRB: PHYSICS MATERIAL WITH QUESTION BANK (E/M)**
- **PG TRB: CHEMISTRY MATERIAL + QUESTION BANK (E/M)**
- **PG TRB: COMMERCE MATERIAL WITH Q.BANK (T/M)&(E/M)**
- **PG TRB:ECONOMICS MATERIAL+Q. BANK (T/M & E/M)**
- **PG TRB: HISTORY MATERIAL + Q. BANK (T/M & E/M)**
- **PG TRB: ZOOLOGY MATERIAL + QUESTION BANK (E/M)**
- **PG TRB: BOTANY MATERIAL +QUESTION BANK (T/M& E/M)**
- **PG TRB: GEOGRAPHY STUDY MATERIAL (E/M)**

**TNPSC-DEO (District Educational Officer(Group – I C Services)
(TAMIL & ENGLISH MEDIUM) STUDY MATERIAL AVAILABLE.**

**TRB-BEO (Block Educational Officer)
(TAMIL & ENGLISH MEDIUM) STUDY MATERIAL AVAILABLE.**

**TRB-POLYTECHNIC LECTURER-(NEW SYLLABUS)
STUDY MATERIALS AVAILABLE**

- **MATHEMATICS STUDY MATERIAL with Question Bank.**

**SRIMAAN COACHING CENTRE-TRICHY- TET/PG-TRB / UG-TRB
BEO/ DEO/TRB-POLY/ASST.PROF/TN-MAWS /TNEB /SCERT
STUDY MATERIALS AVAILABLE- CONTACT:8072230063.**

**2024-25
SRIMAAN**

- **ENGLISH STUDY MATERIAL with Question Bank.**
- **PHYSICS STUDY MATERIAL with Question Bank.**
- **CHEMISTRY STUDY MATERIAL with Question Bank.**
- **MODERN OFFICE PRACTICE STUDY MATERIAL with Q.B.**
- **COMPUTER SCIENCE STUDY MATERIAL with Question Bank.**
- **INFORMATION TECHNOLOGY STUDY MATERIAL with Q.Bank.**
- **ECE STUDY MATERIAL with Question Bank.**
- **EEE STUDY MATERIAL With Question Bank.**
- **MECHANICAL STUDY MATERIAL With Question Bank.**
- **CIVIL STUDY MATERIAL With Question Bank.**
- **EIE STUDY MATERIAL with Question Bank.**
- **ICE STUDY MATERIAL with Question Bank.**

**10% Discount for all materials. Materials are sending through
COURIER.**

TO CONTACT

8072230063

SRIMAAN