

**COMMON QUARTERLY EXAM -2024.  
XI STD BIO ZOOLOGY  
KEY ANSWERS EM (CUDDALORE DIST)**

**I)**

**1.a) Species**

**2.a) Ichthyophis**

**3.a) Tight junction**

**4.c) Mesonephros**

**5.a) Hepatopancreatic duct**

**6.b) 68000 Dalton**

**7.c) Albumin**

**8.b) Length of Henles loop.**

**II)**

**9. \*Probiotic bacteria\***

**i) useful bacteria**

**ii) convert milk into curd eg.lacto  
bacillus**

**\*Pathogenic bacteria\***

**i) harmful bacteria**

**ii) causes disease in plant and animals  
eg.typhoid bacteria**

## **10. \*Biopsy\***

**Examination of tissue or liquid removed from living body.**

### **\*Autopsy\***

**Post mortem, examination to discover the cause of death.**

## **11. \*Heterodont dentition\***

**i) human having four different types of teeth.**

**ii)incisors-2, canines-1,pre molars-2,molars-3.**

**2 1 2 3/2 1 2 3 × 2**

## **12. \*Symptoms of acute mountain sickness\***

**Headache, shortness of breath, Nausea and dizziness due to poor binding of O<sub>2</sub> with haemoglobin.**

## **13. \*Tachycardia\***

**High heart rate**

### **\*Bradycardia\***

**Low heart rate**

## **14. \*Ammonoteles\***

**Ammonia excreting animals are called ammonotelic eg :fishes.**

**III)**

**15. \*Functions of air bladder in fishes\***

**i) Helps in gaseous exchange**

**ii) Maintaining buoyancy.**

**16. \*Components of frog blood\***

**Plasma -60%, blood cells-40%, includes RBC,WBC,platelets.**

**17. \*Dead space\***

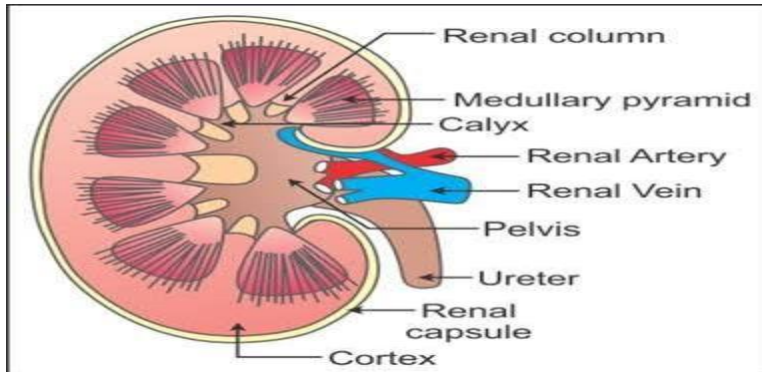
**Some of the inspired air never reaches the gas exchange areas but fills the respiratory passage.**

**18. \*Anastomoses\***

**i) These are connections of one blood vessel with another blood vessel.**

**ii) they provide alternate route of blood flow if the original blood vessel is blocked.**

**19. \*L.S of Kidney\***



**IV)**

**20.a)**

**\*Classical taxonomical tools\***

**i) taxonomical keys**

**ii) museum**

**iii) Zoological parks**

**iv) Marine parks**

**v) printed taxonomical tools**

**b) Epithelium**

**i) simple squamous epithelium (air sac)**

**ii) simple cuboidal epithelium (kidney)**

**iii) simple columnar epithelium (intestine)**

**iv) pseudo stratified ciliated epithelium  
(respiratory tract)**

**v) stratified squamous epithelium  
(esophagus)**

**21.a) \*Functions of liver\***

- i) destroy aging and defective blood cells.**
- ii) stores glucose in the form of glucogen.**
- iii) stores fat soluble vitamins and irons**
- iv) detoxifies toxic substances**
- v) involves Synthesis of urea.**

**b) \*Inspiration\***

**respiratory centre initiate stimuli ✓**

**The diaphragm and respiratory muscles contract✓**

**Thoracic volumes increase✓**

**The intra pulmonary pressure reduce✓**

**They are pressure decrease✓**

**Yaar is taken inside✓**

**Alveoli get inflated✓**

**\*Expiration\***

**Respiratory centre terminus stimuli✓**

**The diaphragm relax ✓**

**Thoracic Volume decreases✓**

**The intra pulmonary pressure increased✓**

**They alviolar pressure increases✓**  
**Yaar is send out due to contraction of**  
**alveoli✓**  
**Air flows out✓**

Prepared by.

M.MURUGAN,.M.Sc ,M.phil,B.Ed.  
PG ASST IN ZOOLOGY,  
NLC GIRLS HR SEC SCHOOL,  
BLOCK -11, NEYVELI.