

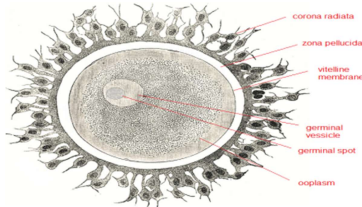
**XII STD COMMON QUARTERLY EXAM -2024
BIO ZOOLOGY ANSWER KEY (CUDDALORE DIST)**

I)

- 1. a)Sertoli cells**
- 2. b) Mayer Rokitansky syndrome.**
- 3 .d) Henry Bastian**
- 4. 3.1 billion**
- 5. c) Devonian**
- 6. b) carbon dating**
- 7. b) Fungus**
- 8. a) Metastasis**

II)

9. A secretor is a person who secretes their blood type antigens into bodily fluids like saliva, mucus, tears, breast milk, urine, and semen.



10.

11. cervical cancers are caused by HPV, a sexually transmitted infection.

HPV spreads through sexual contact and can lead to cancer.

12. Filarial worm- wuchereria bancrofti

Transmission: Female culex mosquitos.

13 .A coprolite is the fossilized feces of an animal that lived millions of years ago.

14 .Ammonia,methane,hydrogen and water vapour.

III)

15. i)Colostrum is a yellowish, nutrient rich fluid produced by human female immediately after parturition.

ii) it has protein, vitamin A, IgA antibodies,less lactose no fat. etc

16 .The withdrawal symptoms may range from mild tremors to convolutions, severe agitations and fits. depressed mood , anxiety ,nervousness, restlessness, irritability , insomnia and dryness of throat.

17 .i) Mental Retardation

ii)Light pigmentation of skin and hair.

iii)phenylpyruvic acid is excreted in urine.

18 .i) identify all the genes approximately 30000 in human DNA.

ii) determine the sequence of the three billion chemical base pairs that make up the human DNA.

iii) to store this information in database.

19 .i) Amoebiasis also called amoebic dysentery is caused by *Entamoeba histolytica*.

ii) which lives in the human large intestine and feeds on food particles and bacteria.

iii) Dysentery with blood and mucus in the stool.

IV)

20.a) Syngamy.

i. Autogamy

ii. Exogamy

iii) Hologamy

iv) Paedogamy

v) merogamy

b) Immunoglobulin

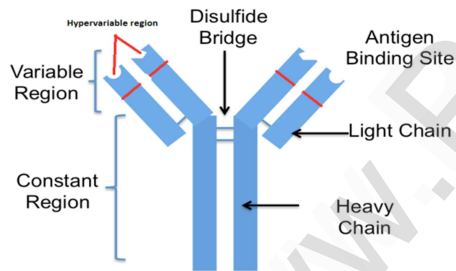
i) In 1950s Porter and Edelman revealed the basic structure of the Immunoglobulin.

ii) Y shaped & 4 polypeptide chains.

iii) light chain 25000 Da, (214 amino acid)

iv) Heavy chain 50000 Da (450 amino acids)

v) the polypeptide chains are linked together by disulphide (S-S) bond



21.a)

i) Forensic analysis

ii) pedigree analysis

iii) conservation of wildlife

iv) Anthropology studies.

b)

i) Hardy Weinberg law

ii) Explain the equilibrium

iii) genotype equation

iv) Factors affecting Hardy Weinberg law.