

SIR CV RAMAN COPACHING CENTRE – IDAPPADI –SALEM

XLL BIOLOGY IMPORTANT DIGRAMS- 2024

PREPARED BY Dr.G.THIRUMOORTHY,M.Sc.B.Ed ,Ph.D

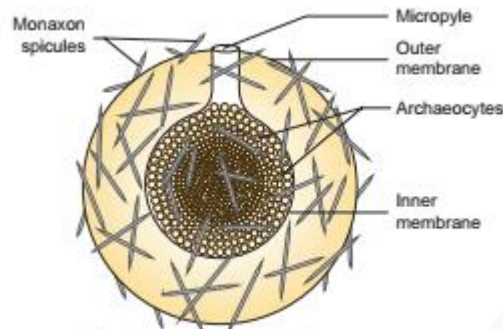
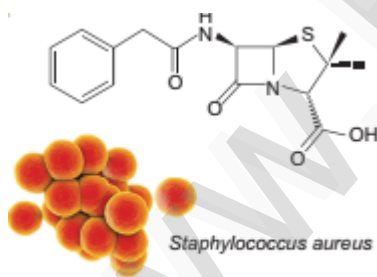


Fig. 1.9 Gemmule in sponges



Discovery of penicillin

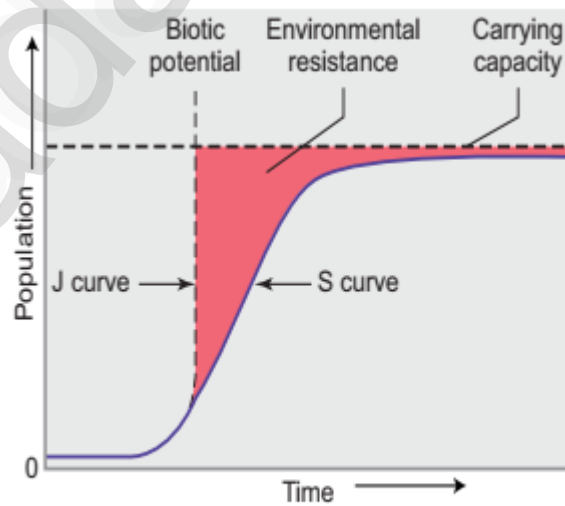


Fig. 11.11 J-Shaped and S-Shaped growth curves

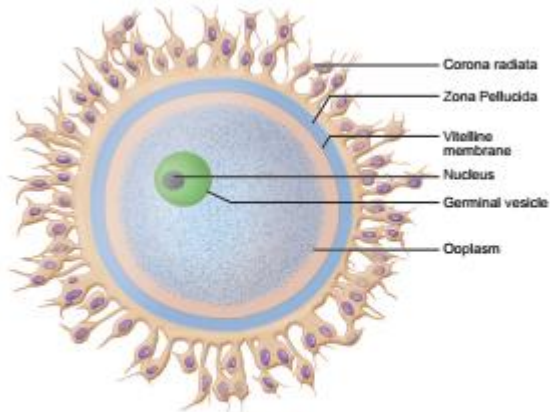


Fig. 2.8 (b) Diagrammatic view of the human ovum

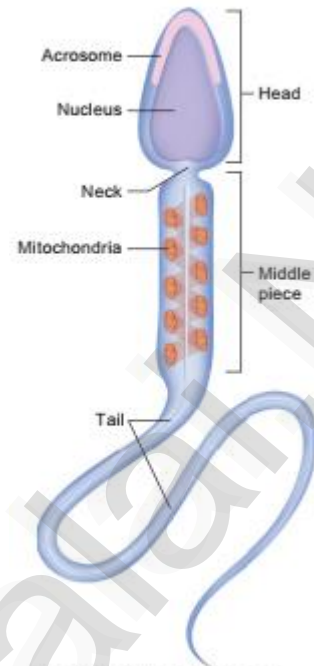
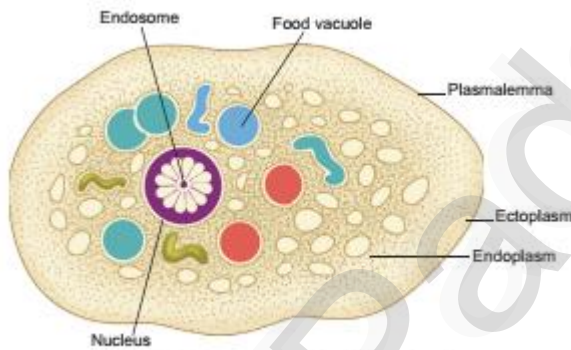


Fig. 2.7 Structure of human sperm



b

Fig. 7.1 Entamoeba histolytica

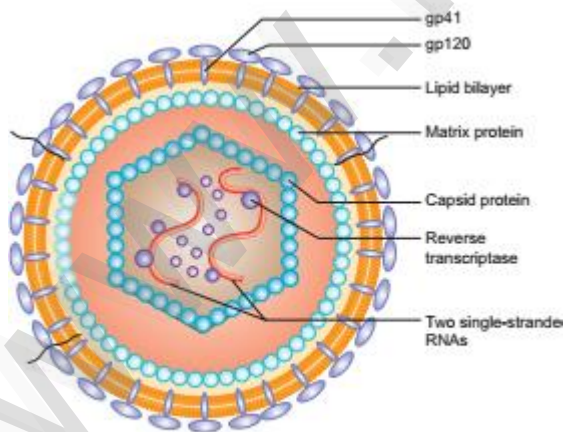


Fig. 8. 10 Structure of HIV

Name the parts marked 'A' and 'B' in the given transcription unit:

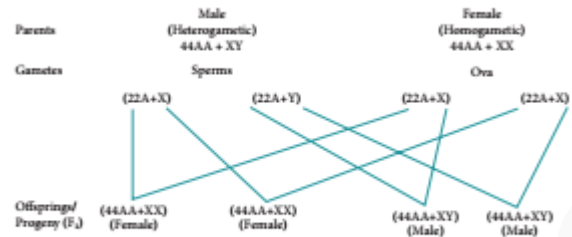
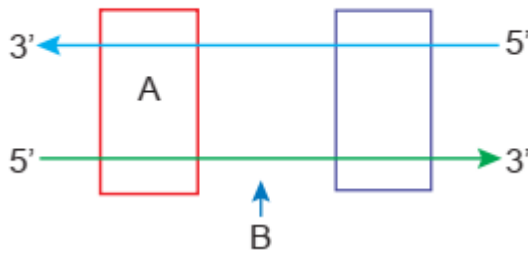


Fig. 4.2 Sex determination in human beings

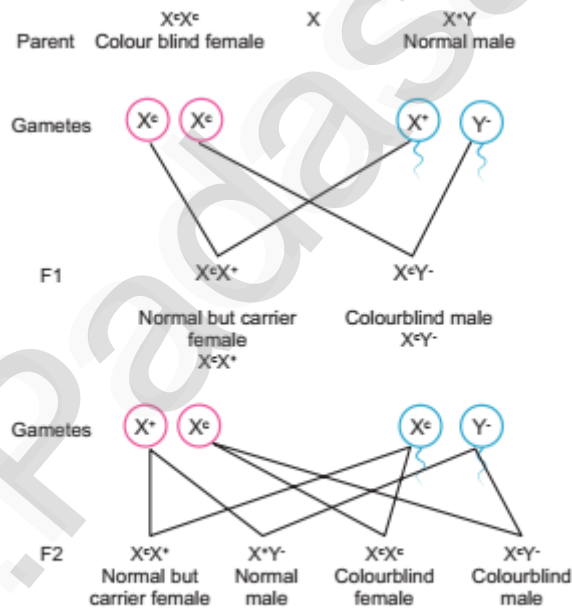
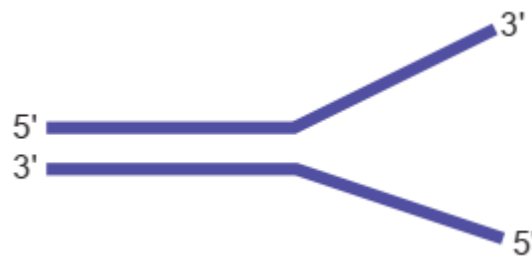
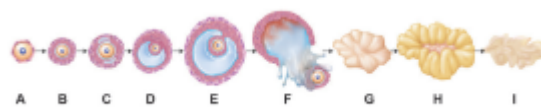


Fig. 4.4 Marriage between normal visioned man and colour blind woman



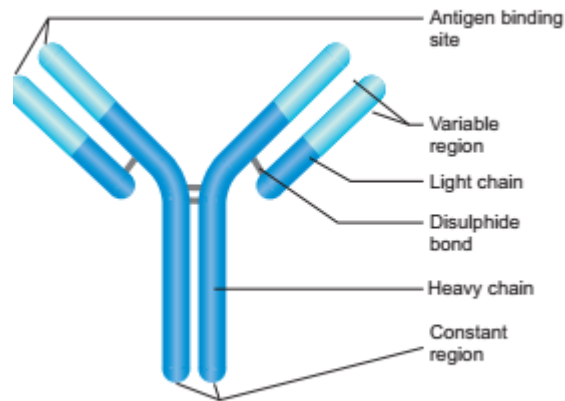
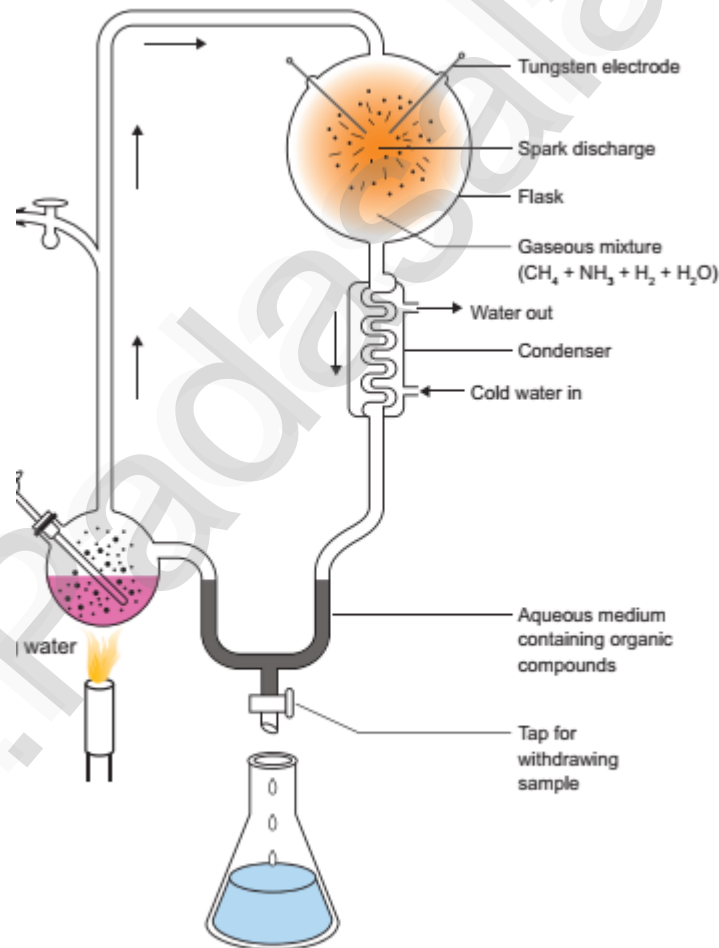


Fig. 8.7 Structure of immunoglobulin



1 Diagrammatic representation of Urey-Miller's experiment

The figure given below is a diagrammatic representation of response of organisms to abiotic factors. What do A, B and C represent respectively.

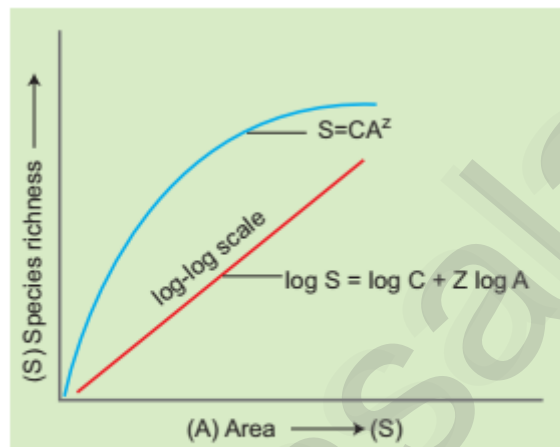
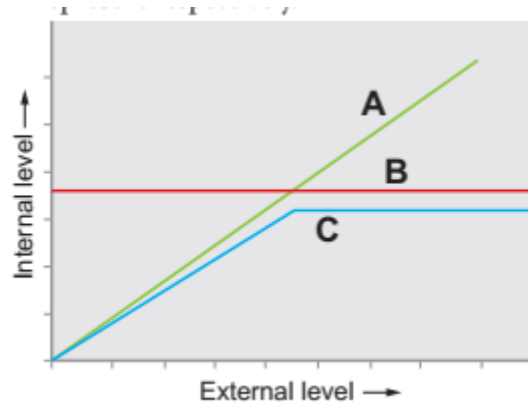


Fig. 12.2 Species - Area relationship on log scale

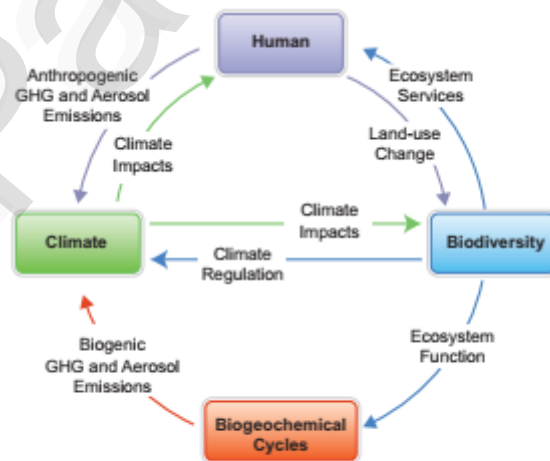
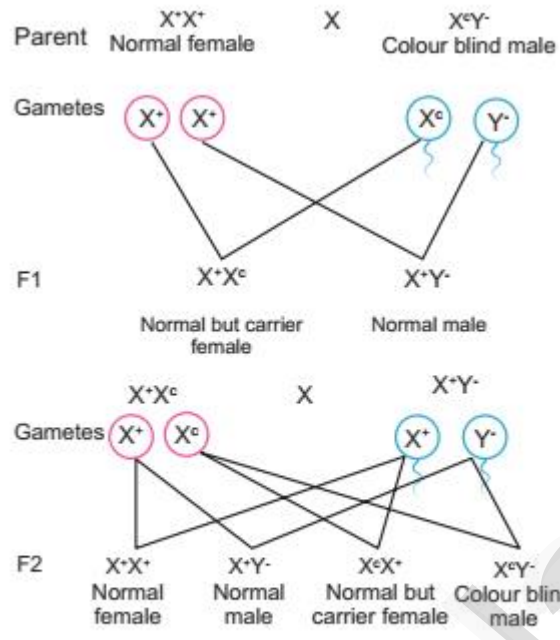


Fig. 12.4 Links between biodiversity, climate change and human well - being



3 Normal vision : 1 carrier colour blind

Fig. 4.3 Marriage between colour blind man and normal visioned woman

PREPARED BY

Dr.G.THIRUMOORTHY.M.Sc,B.Ed, Ph.D

thiruphysics1994@gmail.com

IDAPPADI,SALEM

8610560810