

SIR CV RAMAN COACHING CENTRE –IDAPPADI-SALEM

XLL BOTANY IMPORTANT DIAGRAM

PREPARED BY Dr.G.THIRUMOORTHY,M.Sc,B.Ed,Ph.D ,PHYSICS

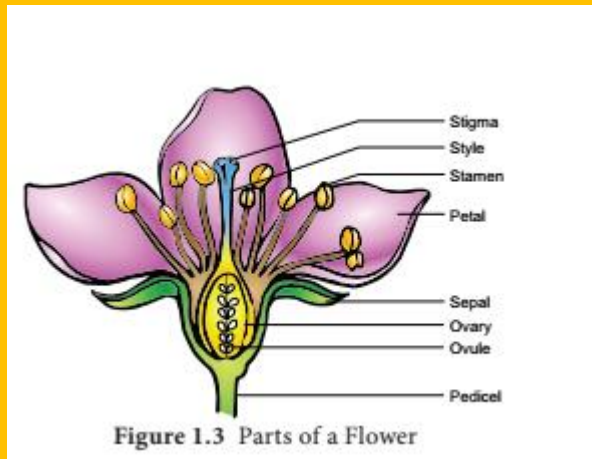


Figure 1.3 Parts of a Flower

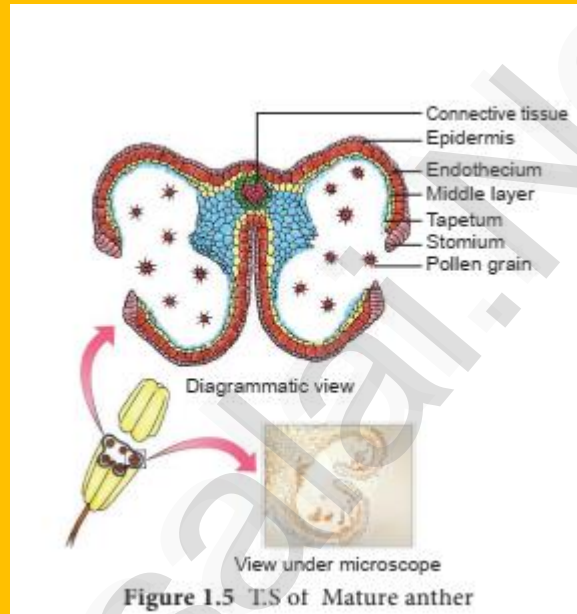


Figure 1.5 T.S of Mature anther

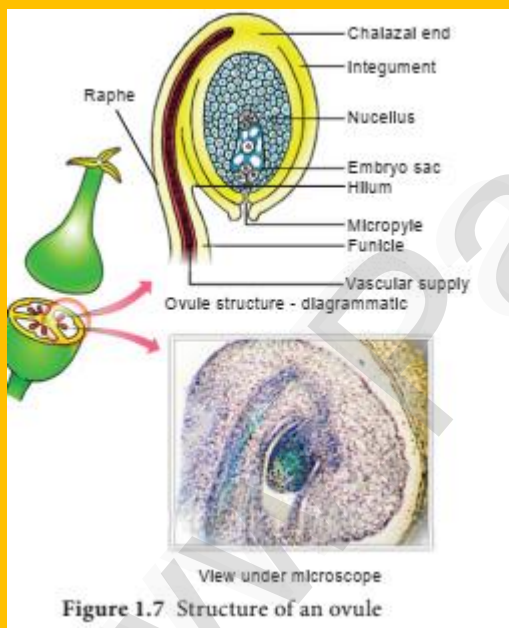


Figure 1.7 Structure of an ovule

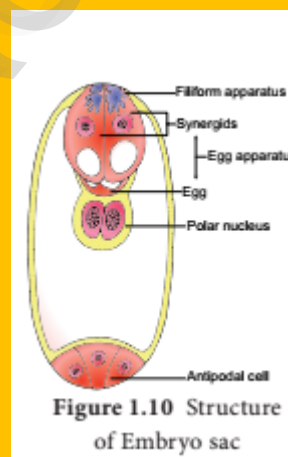
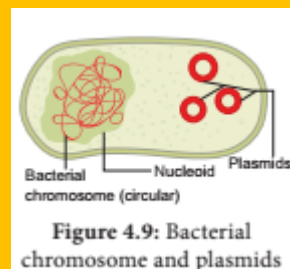
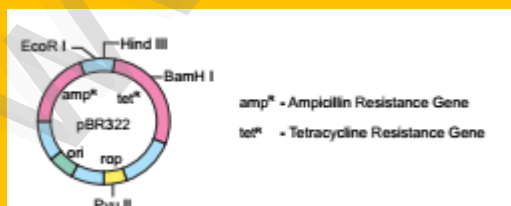
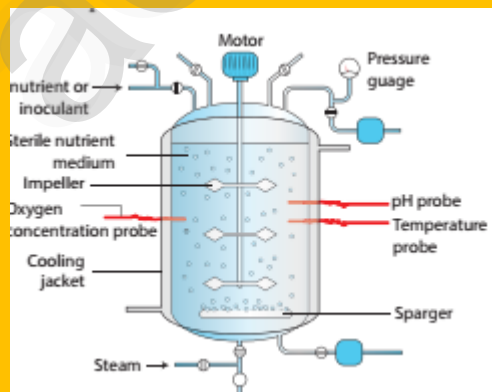
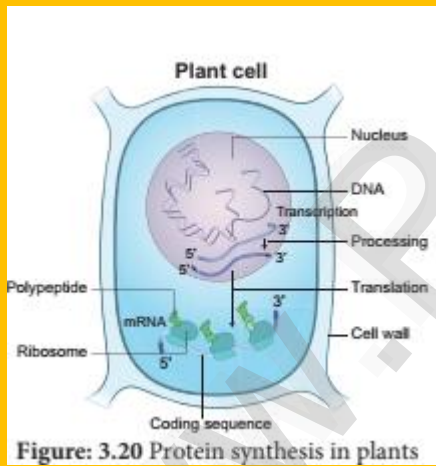
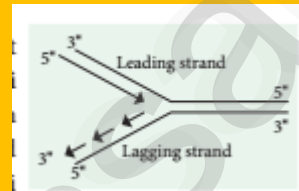
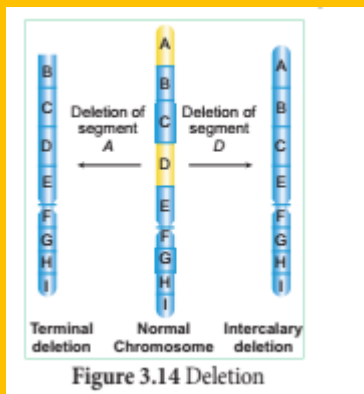
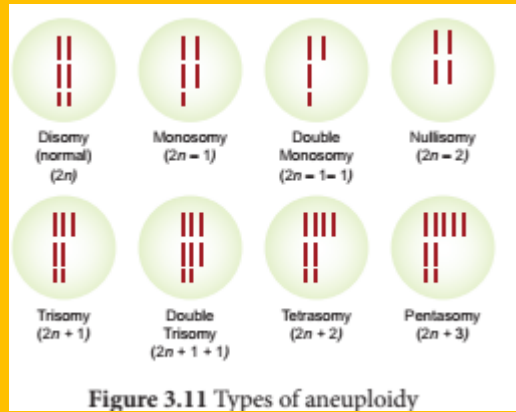


Figure 1.10 Structure of Embryo sac



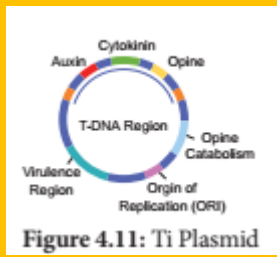


Figure 4.11: Ti Plasmid

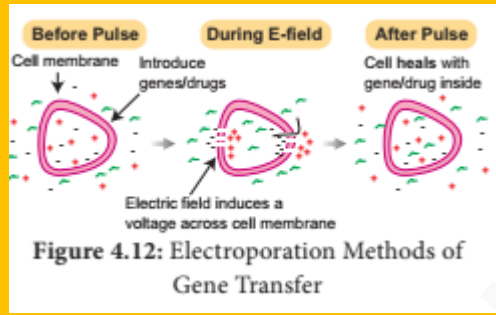


Figure 4.12: Electroporation Methods of Gene Transfer

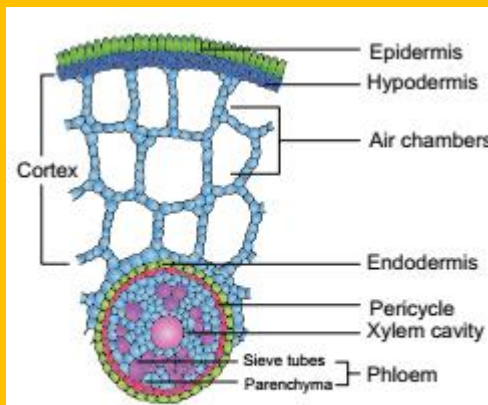


Figure 6.19: T.S. of Hydrilla stem

Physiological adaptations of Hydrophytes:

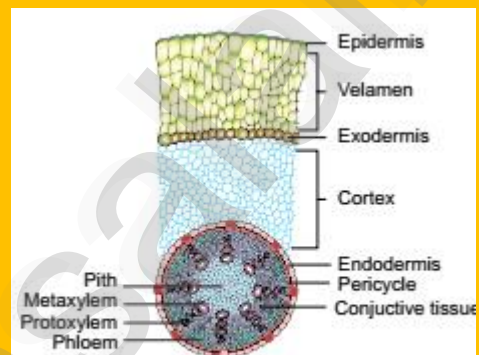


Figure 6.25: T.S. of an aerial root of Orchid showing velamen tissue

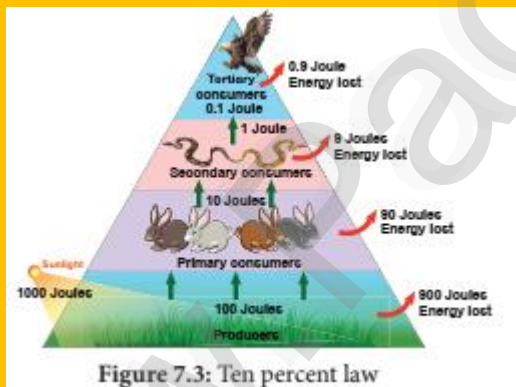
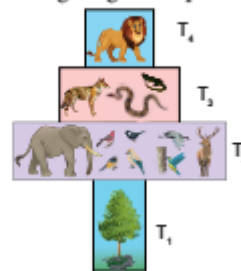


Figure 7.3: Ten percent law

The following diagram represents



DR .G.THIRUMOORTHY ,.M.SC ,B.ED ,PH.D ,PHYSICS

thiruphysioics1994@gmail.com

8610560810

IDAPPADI,SALEM

www.Padasalai.Net