

SIR CV RAMAN COACHING CENTRE – IDAPPADI,SALEM

XLL PHYSICS UNIT – 6 -IMPORTANT DIAGRAMS

PREPARED BY Dr.G.THIRUMOORTHY,M.Sc,B.Ed,Ph.D ,PHYSICS

(14.12.2024)

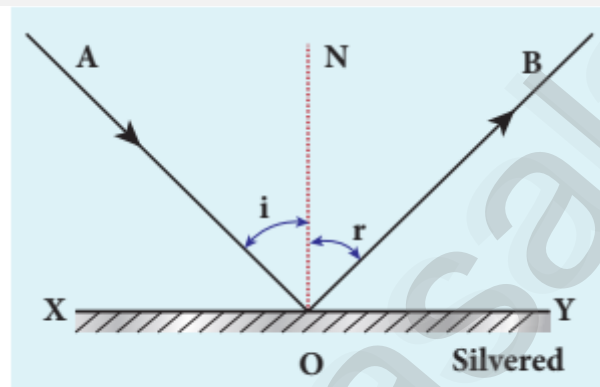


Figure 6.1 Reflection of light

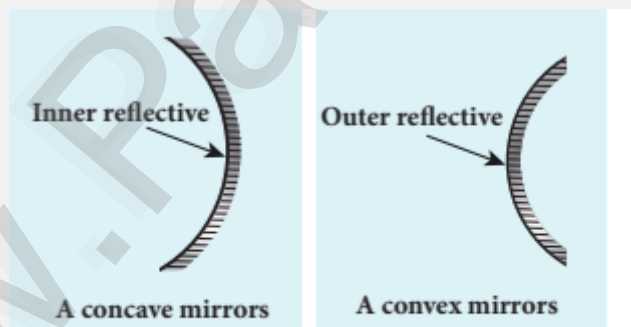


Figure 6.6 Spherical mirrors

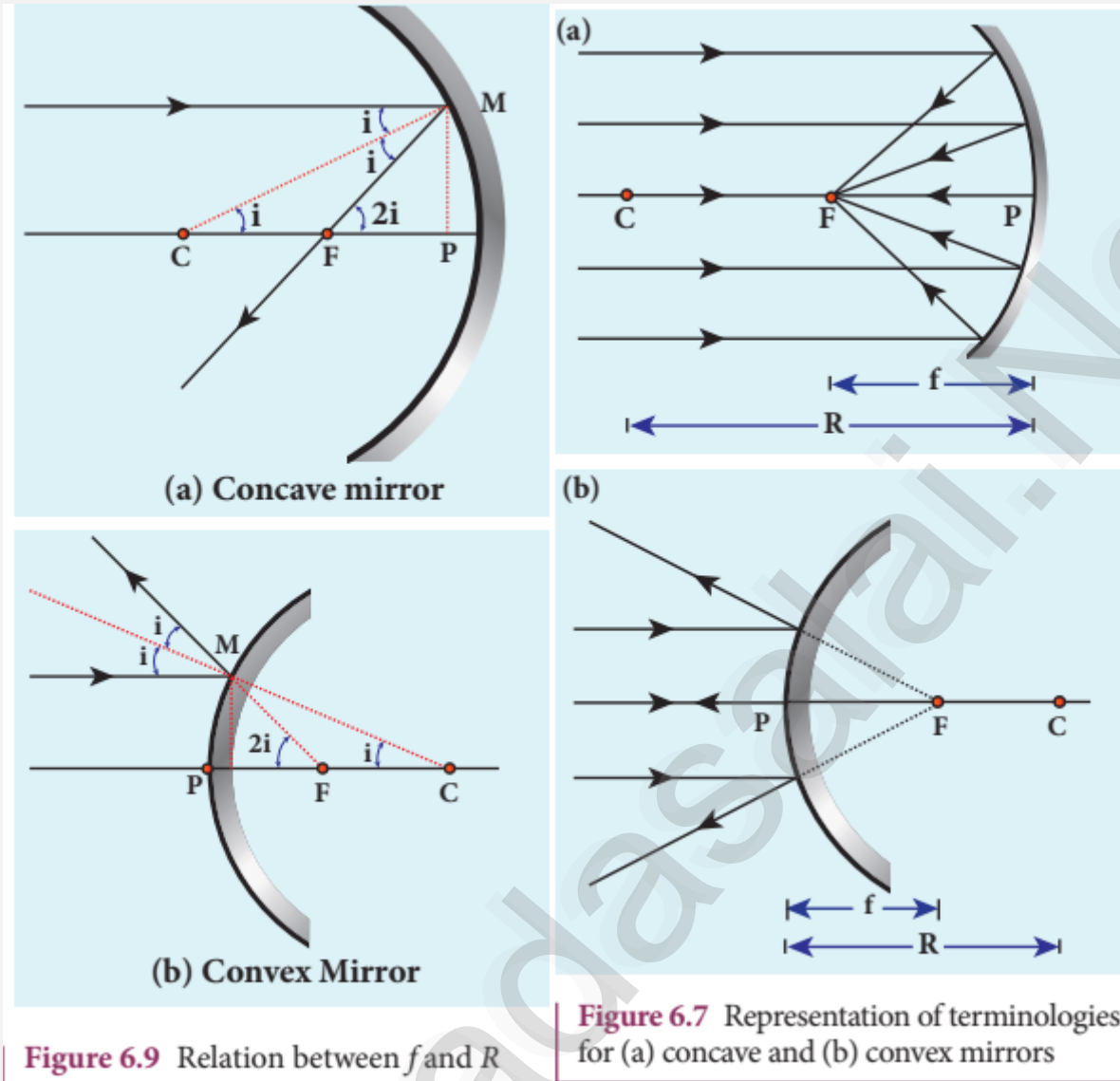


Figure 6.9 Relation between f and R

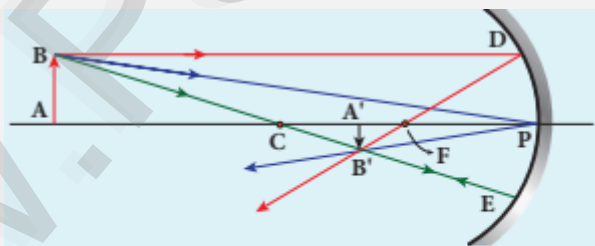


Figure 6.12 Mirror equation

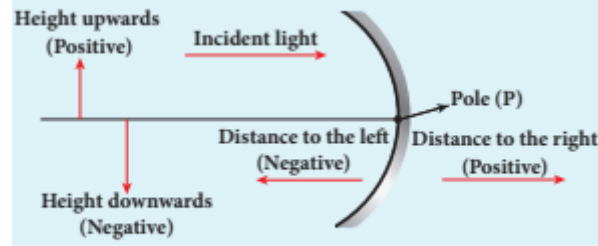


Figure 6.11 Cartesian sign convention

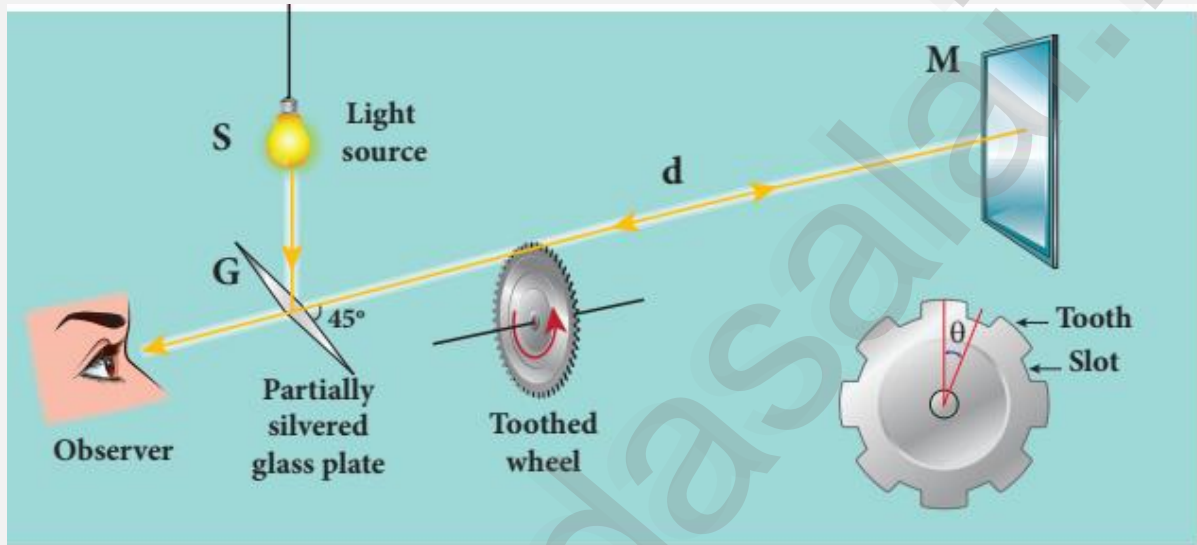


Figure 6.13 Speed of light by Fizeau's method

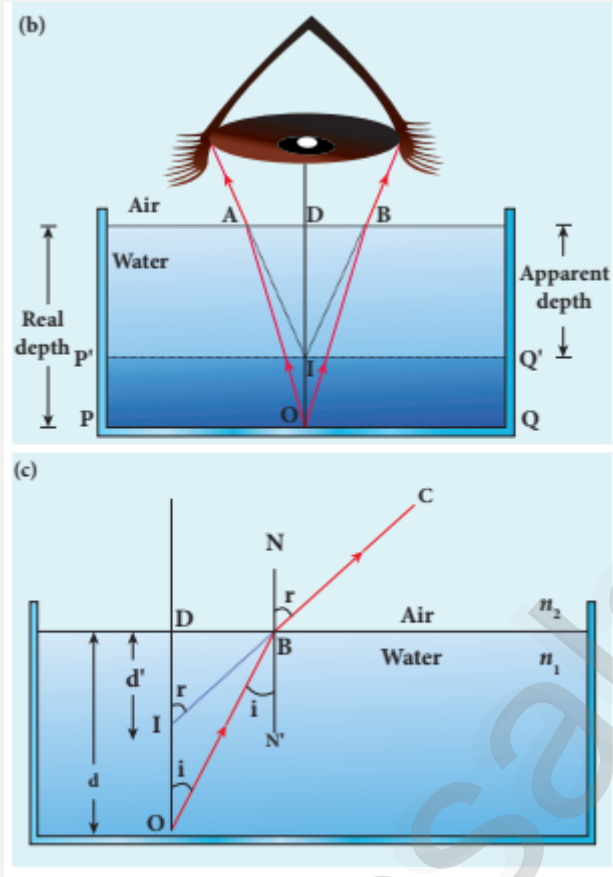


Figure 6.20 Apparent depth

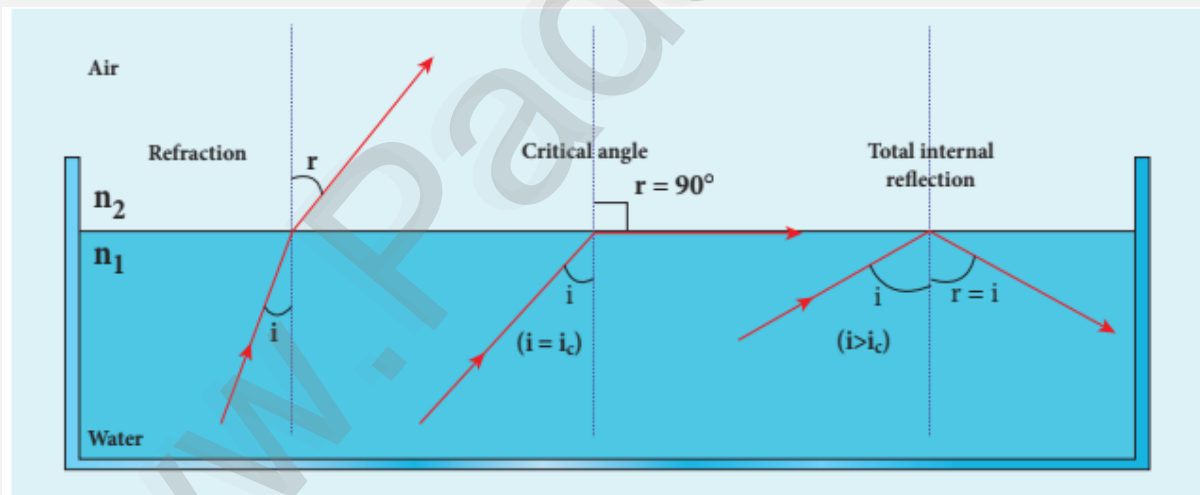


Figure 6.21 Critical angle and total internal reflection

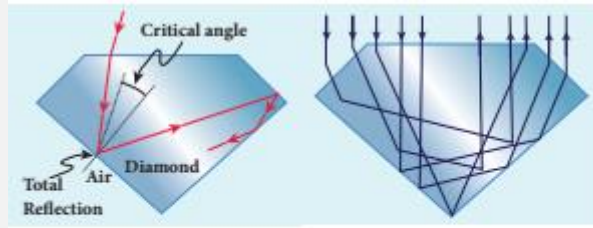


Figure 6.22 Total internal reflection in diamond

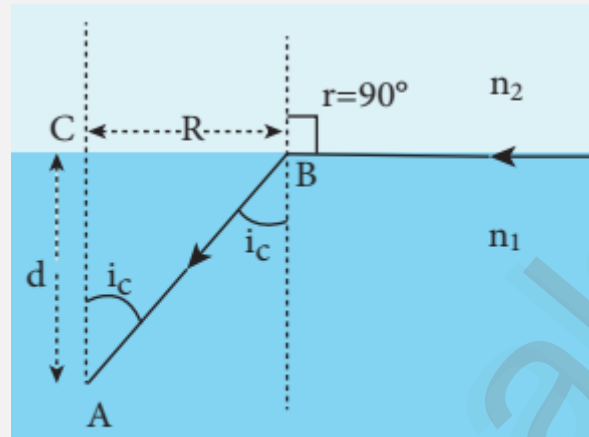


Figure 6.27 Radius of Snell's window

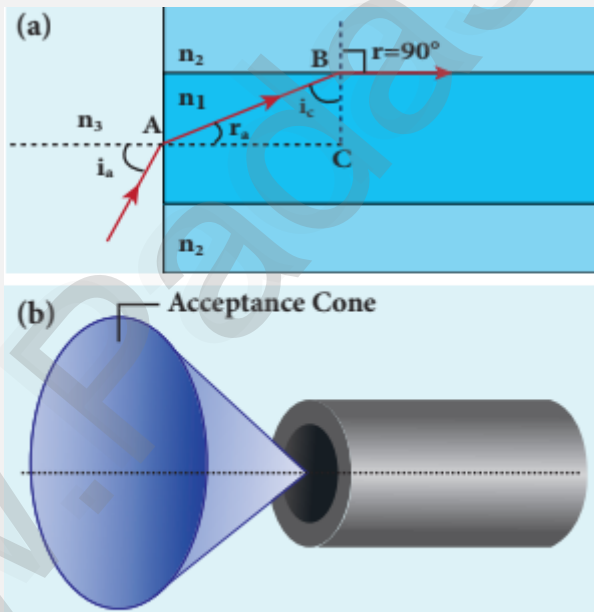


Figure 6.29 (a) acceptance angle and (b) acceptance cone

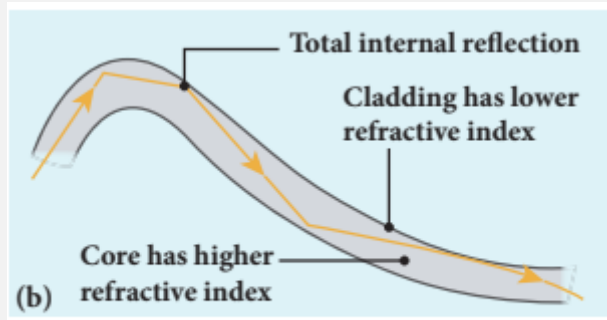


Figure 6.28 Optical fibre

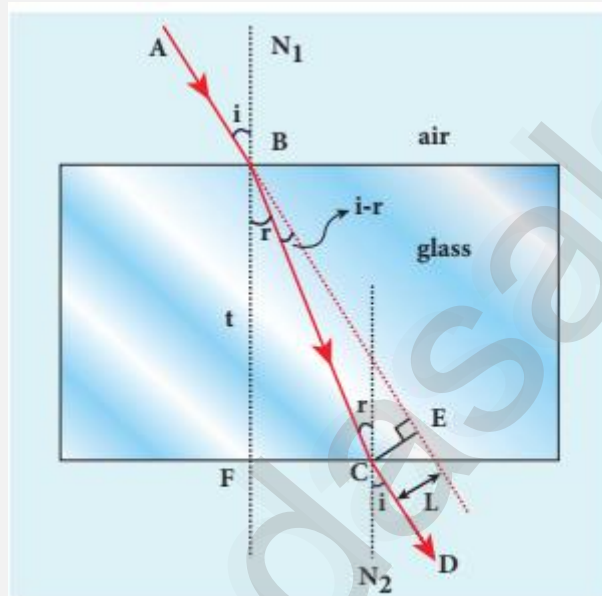


Figure 6.30 Refraction in glass slab

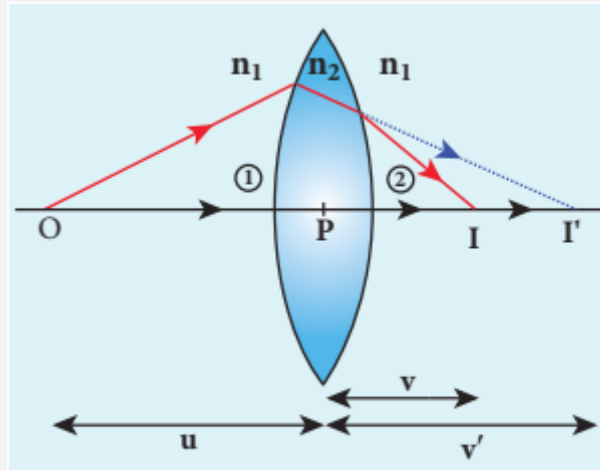


Figure 6.34 Refraction through thin lens

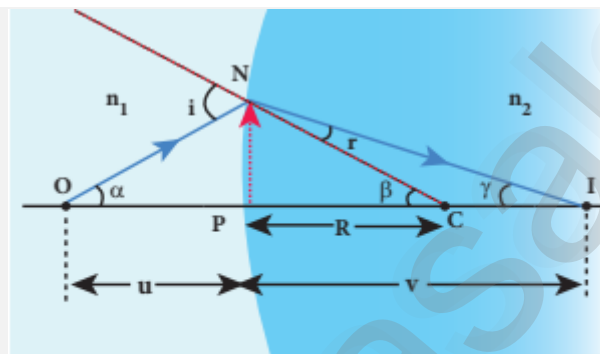


Figure 6.31 Refraction at single spherical surface

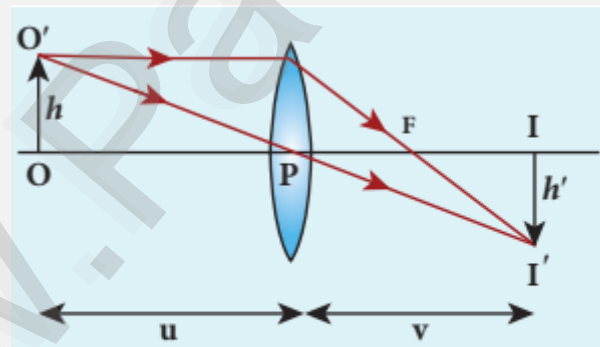


Figure 6.35 Lateral magnification in thin lens

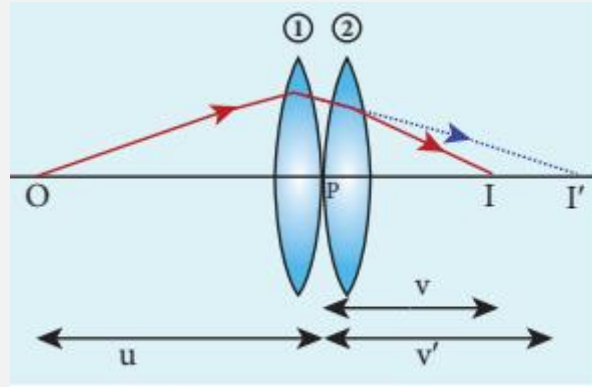


Figure. 6.37 Lenses in contact

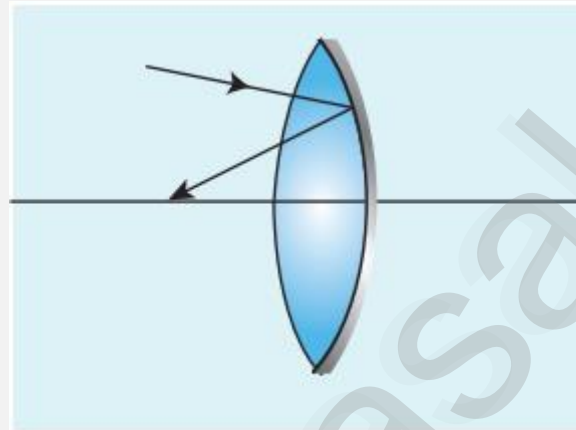


Figure 6.38 Slivered lens

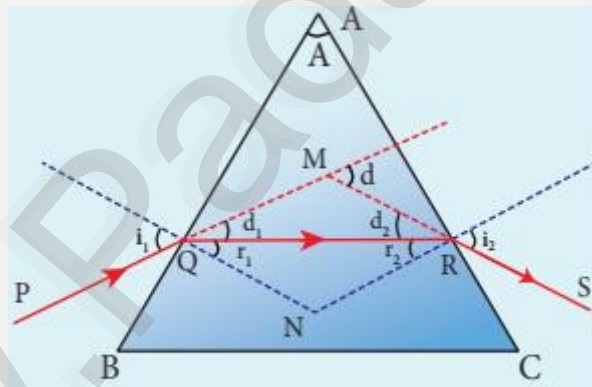


Figure 6.40 Refraction through prism

SIR CV RAMAN COACHING CENTRE – IDAPPADI,SALEM

XLL PHYSICS UNIT – 6 IMPORTANT DIAGRAMS

PREPARED BY Dr.G.THIRUMOORTHU,M.Sc,B.Ed,Ph.D ,PHYSICS

thiruphysics1994@gmail.com ,8610560810

www.Padasalai.Net